

CONSERVATION BEFORE & AFTER PHOTOS 2019



COLORADO MOUNTAIN CLUB
ONLINE UNIVERSITY

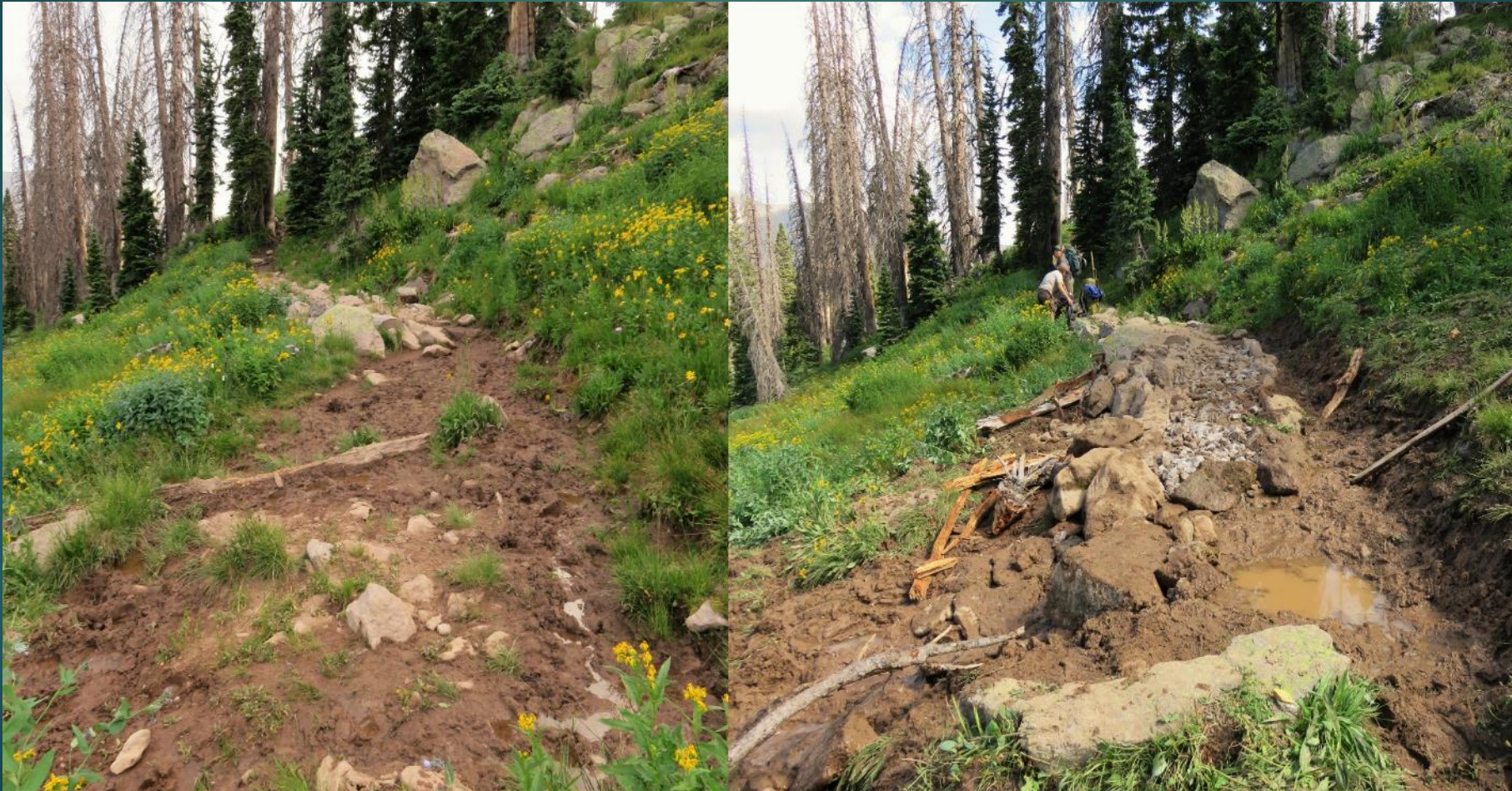
All the Skills You Need to Thrive Outside



Before & After

- ▶ Before & after photos are a commonly used tool in conservation work. They offer an easy way to visually display the work that was accomplished on a project. Many times land managers, grant providers, and interested public, are not able to visit the project site in person.
- ▶ They are fairly self explanatory, but for this document all before photos will appear on the left, and all after photos on the right.
- ▶ CMC members might not be able to experience much of the work the Stewardship Crew performs every year, but here are some glimpses.

This is on the Continental Divide Trail just north of Wolf Creek Pass. Work was done over two weeks to create a large armored drainage structure.



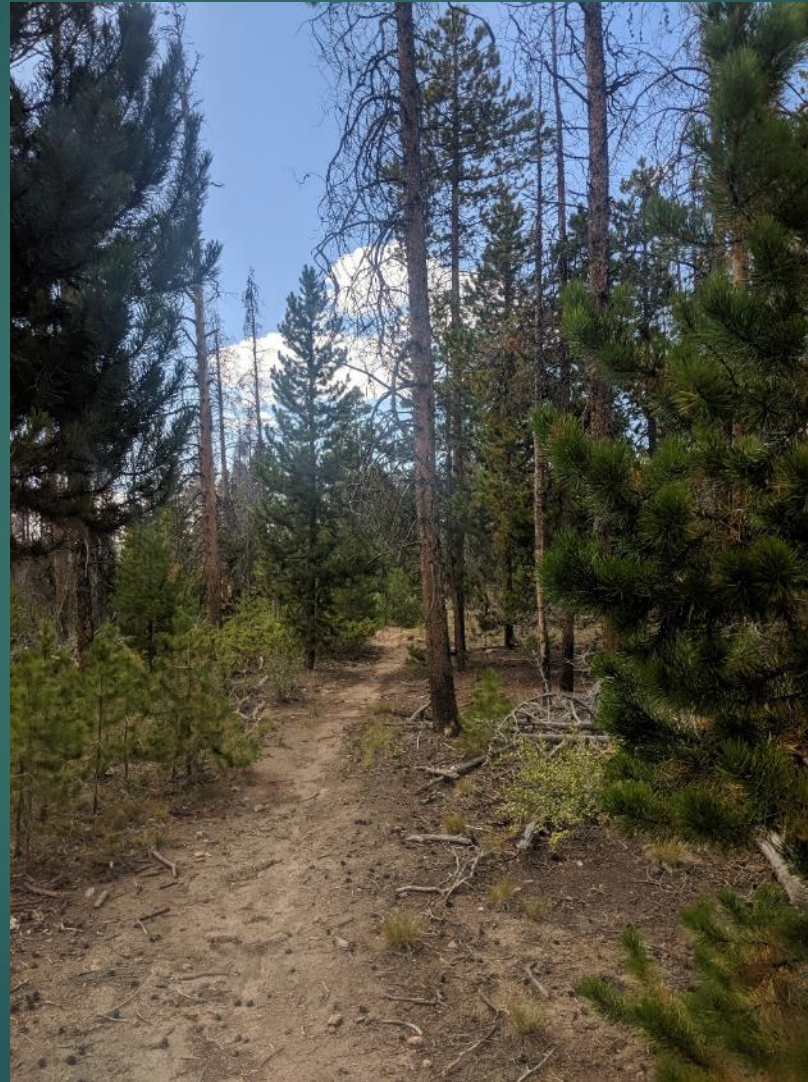
This is the same structure from the other end.



- ▶ On the Cataract Gulch Trail near Lake City, the crew repositioned rocks to make a more sustainable and easy path. Something to consider is the character of the trail in total. If the crew put in pristine rock stairs it would stick out from the rest of this trail, which is fairly “rustic”.



- ▶ These next two photos might look like they are in the wrong order, but they are from a restoration project near Tabernash. This old trail had been previously closed at the entrances, but people were still using it. The crew helped to more permanently close this trail by dropping standing dead trees across the trail

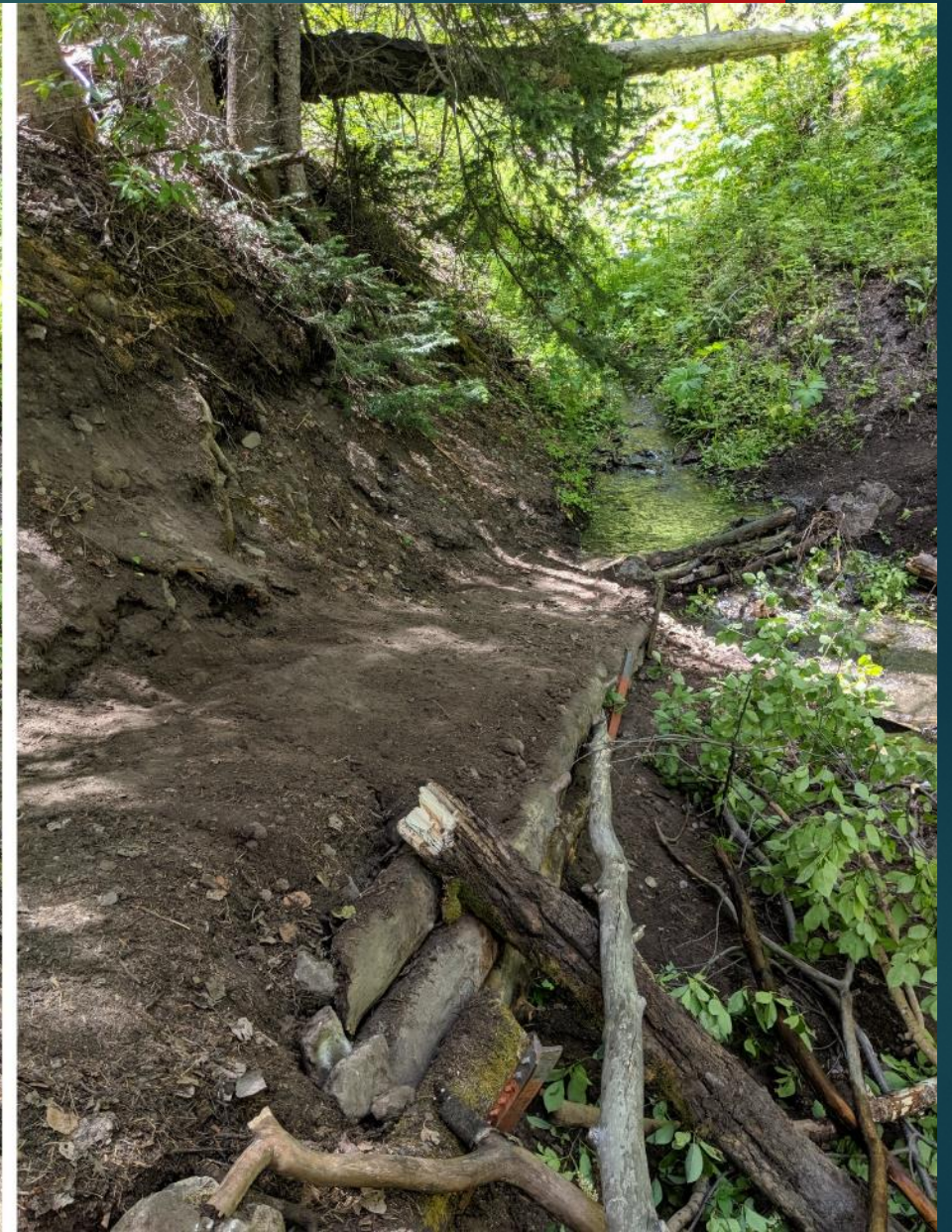




- This picture shows some of the trees piled up from the historic avalanche cycle in 2019. The Dallas Trail near Ouray was hit especially hard. If trails are not logged out immediately after events like this they often become inundated with downed trees and become impassable.



- On the other end of the Dallas Trail, a section of retaining wall had failed and the crew worked to rebuild it using available materials.



- These pictures are from a new trail construction project near Buena Vista. This section of trail had a large ramp structure created to make the section more user friendly.



- Camp Elevation was a new trail construction project in 2019. The rock circled in red was moved to create more width and ended up being an important part of retaining the tread material.



- ▶ Similar to the previous photos, a large rock was moved to make the trail smoother, and it ended up supporting the tread.



- This picture shows the creation of a bermed turn for a mountain bike trail. All of the rocks seen in the before photo were used as the structure in the berm of the after photo.



- ▶ This is from new trail construction of the “Unchained” trail near Buena Vista. It demonstrates the amount of work needed to create new trails, especially in rocky terrain.

