



# USFS Over-Snow Vehicle Rule Update

September 2015

Julie Mach

Colorado Mountain Club

Backcountry Snowsports Initiative

[www.cmc.org/BSI](http://www.cmc.org/BSI)



# OSV Rule Updates



- \* Rule Passed - Jan 2015
- \* Directives from D.C. - expected Jan 2016
  - \* Will include requirements for Motor Vehicle Use Maps  
Color Scheme, Topography, Features

- Region-wide assessment team will analyze current decisions, identify priority planning areas

## Next steps for Forests:

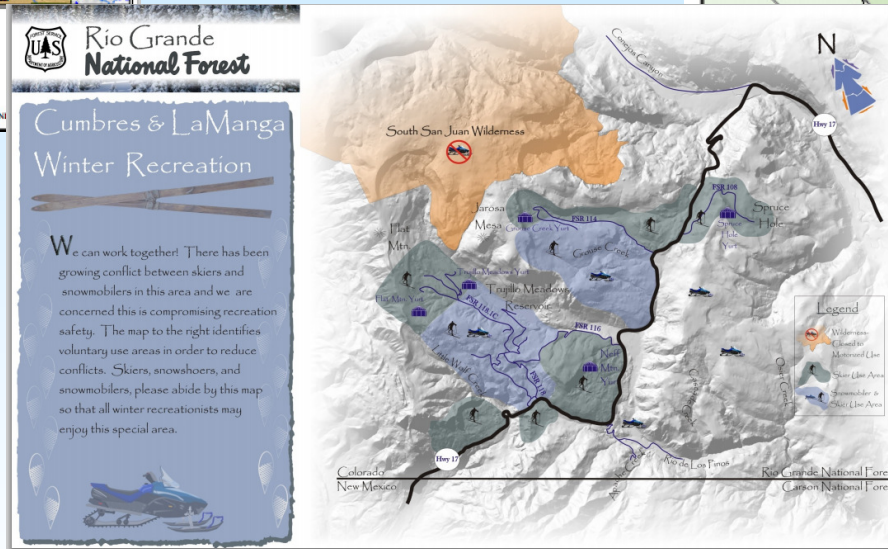
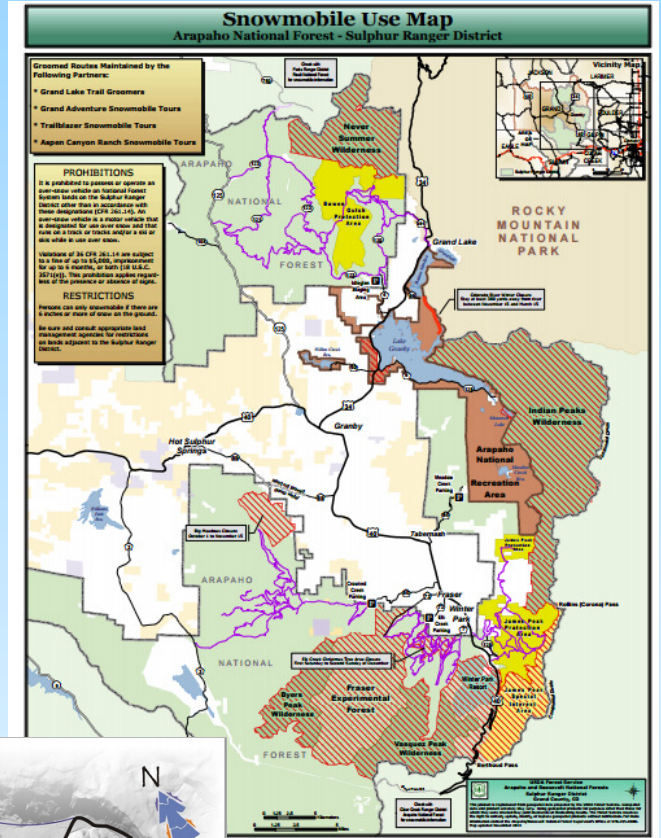
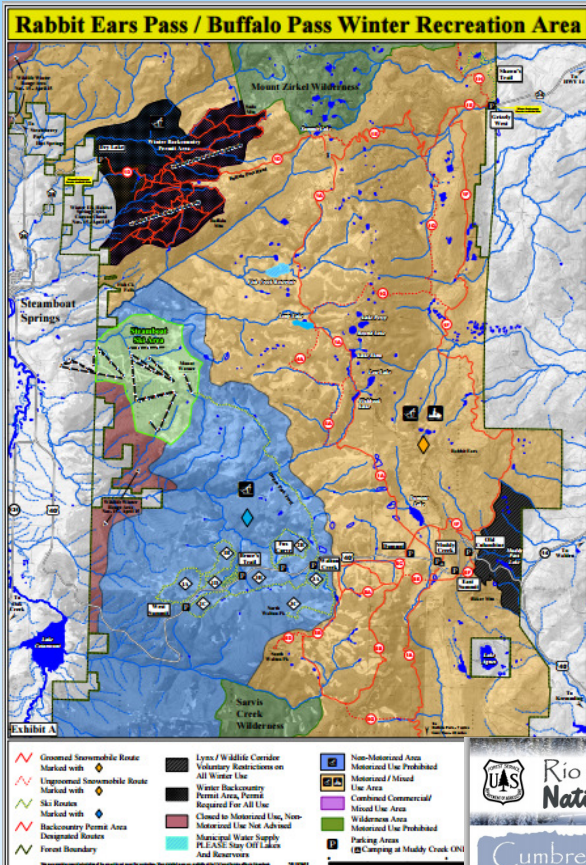
### \* Prior Decision:

- Publish Winter Travel Maps

### \* No Prior Decision:

- Winter Travel Planning
- Public Input
- Decision
- Publish Winter Travel Maps

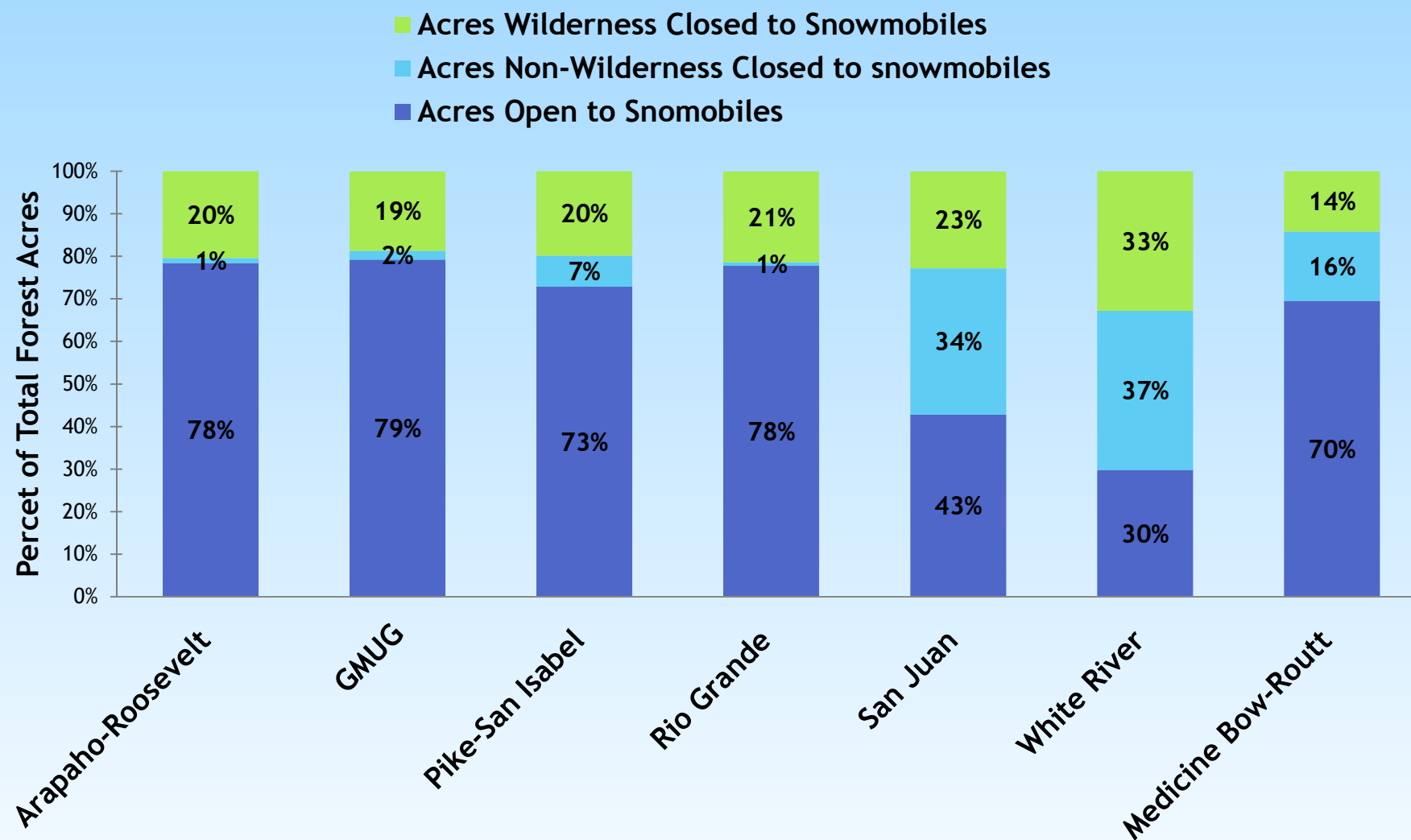
# Sample of Current Maps



No consistent  
color scheme,  
feature clarity,  
or type of  
restrictions.

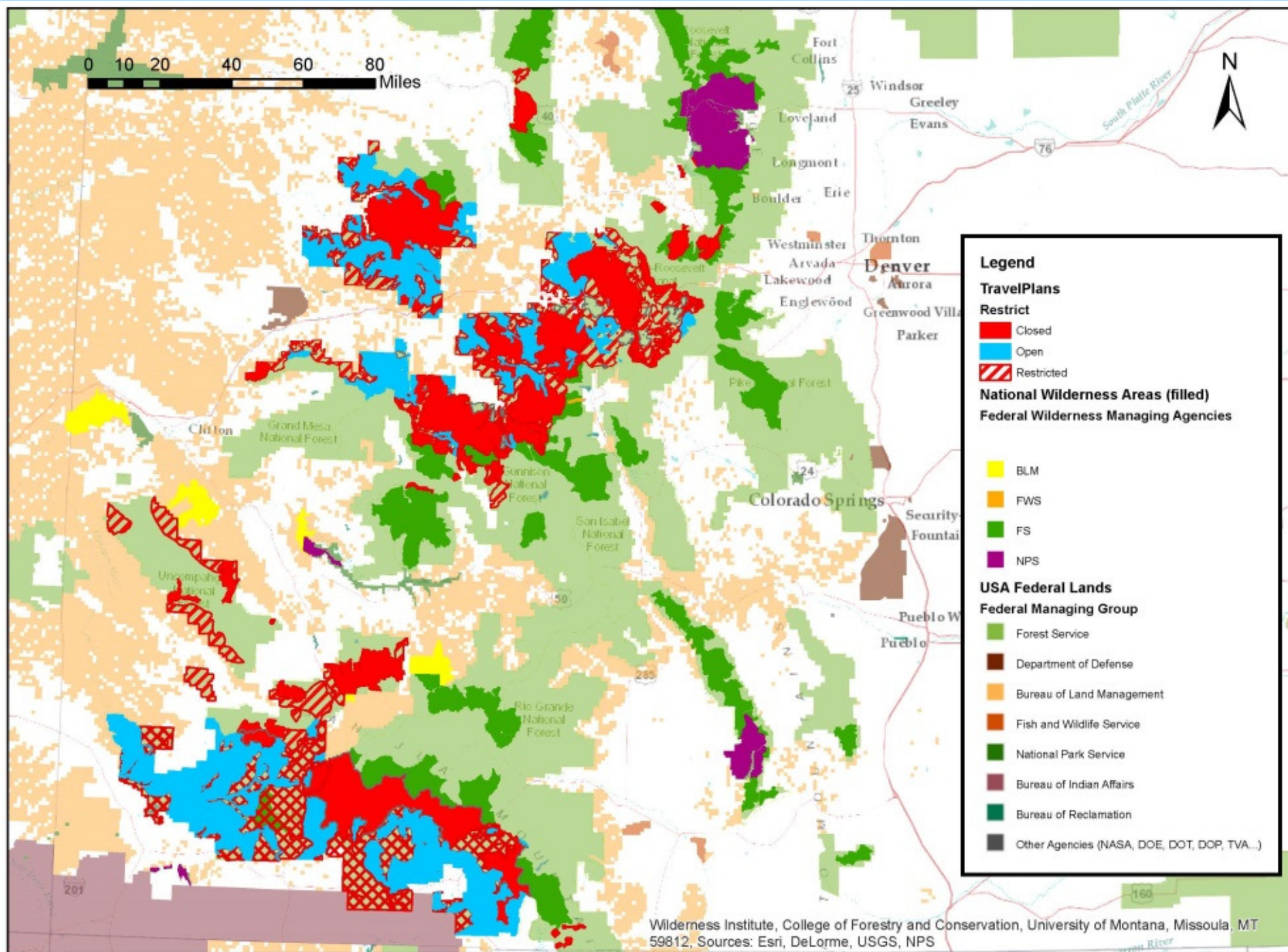
## Analysis of Current Conditions

### Colorado Forests - 2015 Winter Travel Restrictions



Data from Winter Wildlands Alliance "Winter Recreation on National Forest Lands" (2015)





Wilderness Institute, College of Forestry and Conservation, University of Montana, Missoula, MT  
59812. Sources: Esri, DeLorme, USGS, NPS

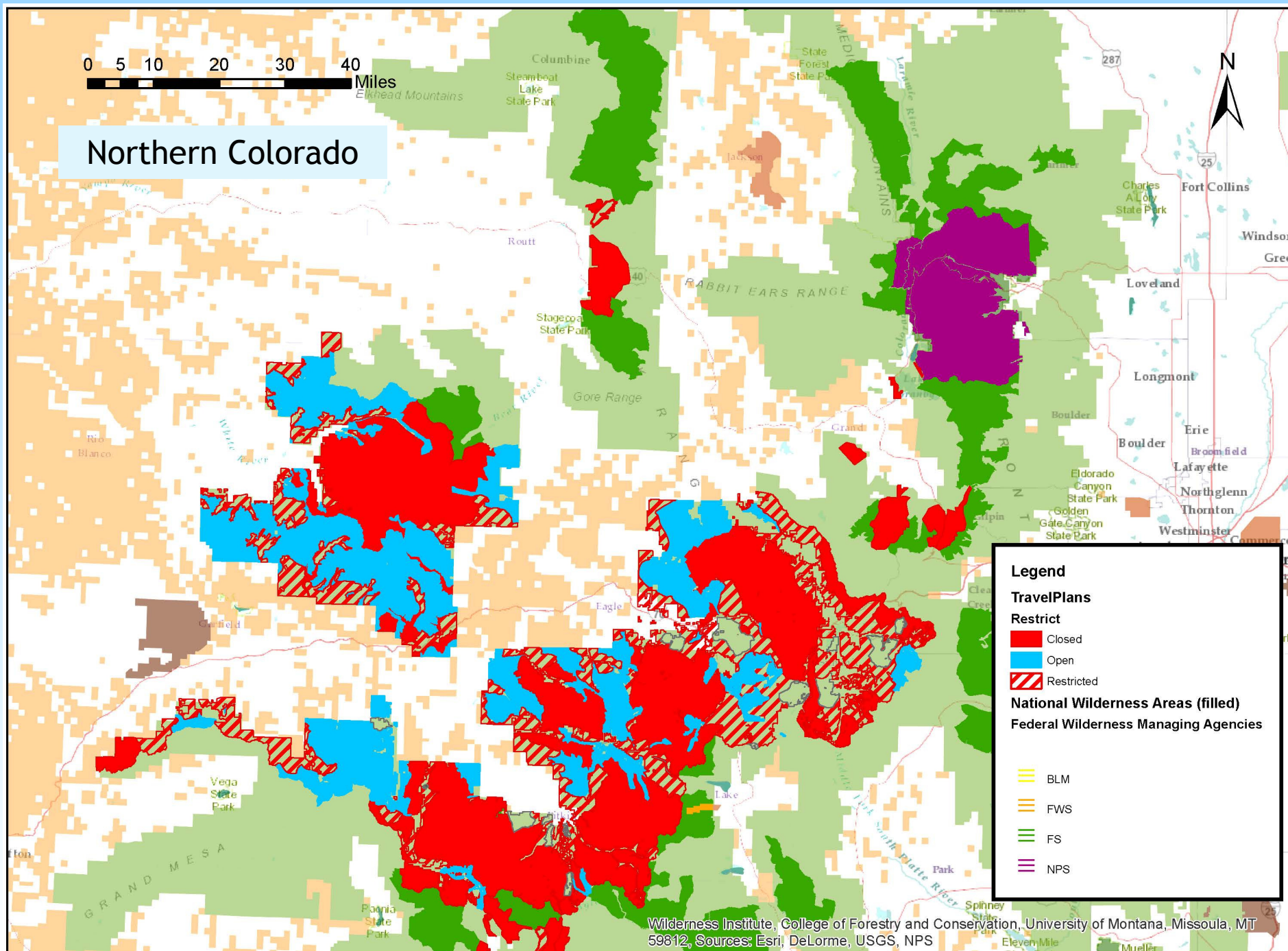
# Current OSV Restrictions in Colorado

- \* Closed = closed to motorized vehicles. Includes all Wilderness areas, some experimental forests and resource management areas
- \* Restricted = motorized vehicles restricted to designated routes (roads and motorized trails).
- \* Open = motorized travel unrestricted. Currently any Forest Service land without a closed or restricted designation (shown in light green on all maps) is effectively open.
- \* White River National Forest is the only CO forest with a comprehensive winter travel plan

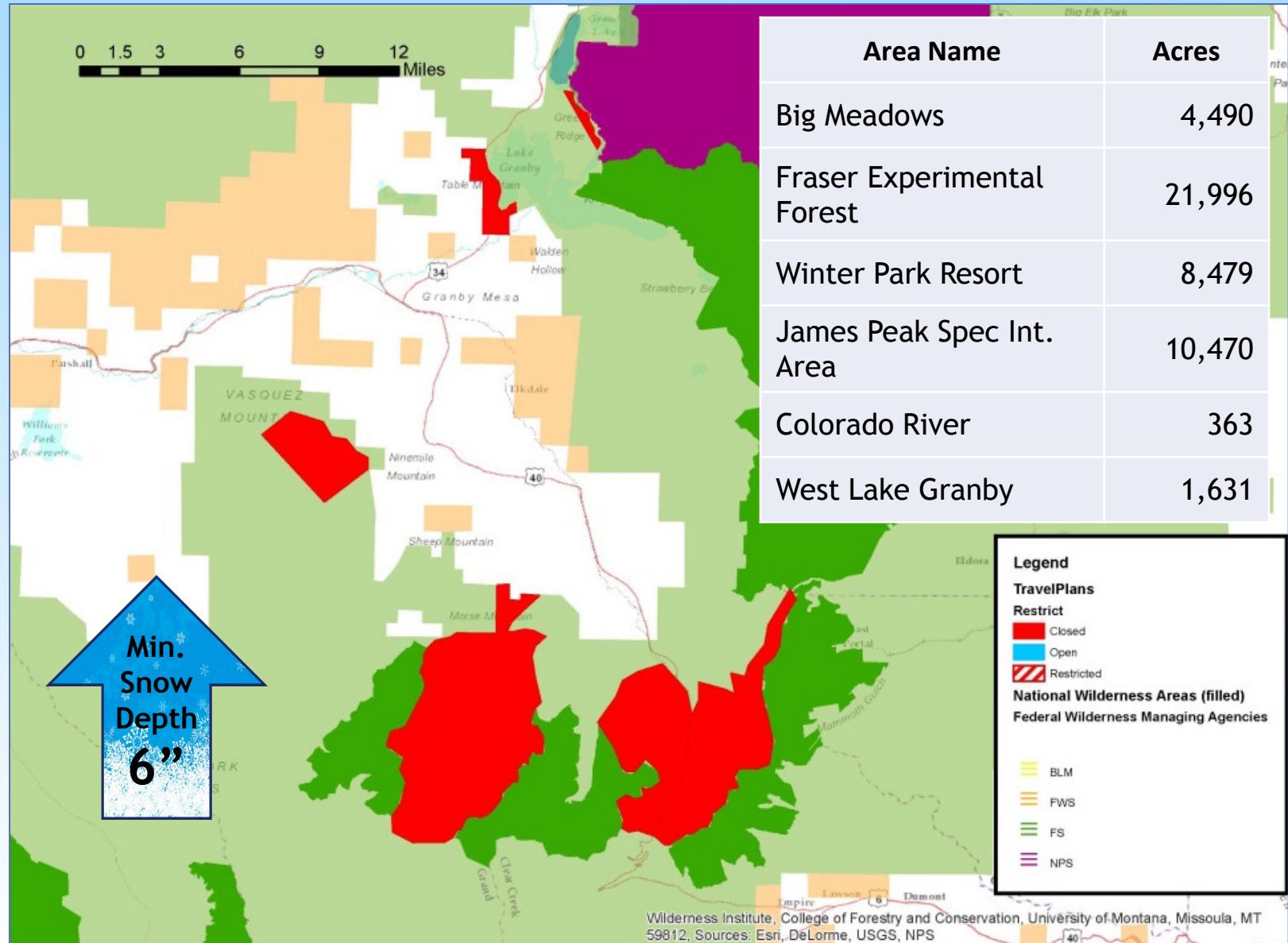


0 5 10 20 30 40 Miles

## Northern Colorado

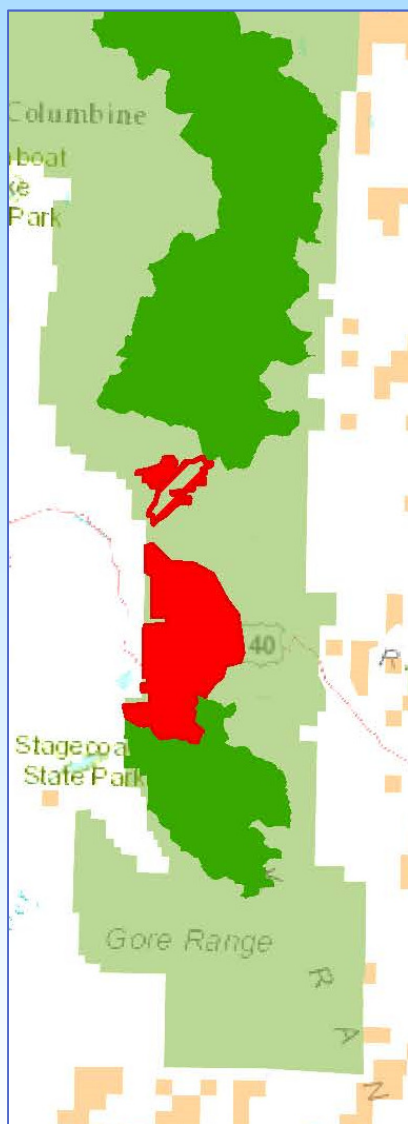


# Arapaho-Roosevelt (Sulfur RD)





# Routt National Forest

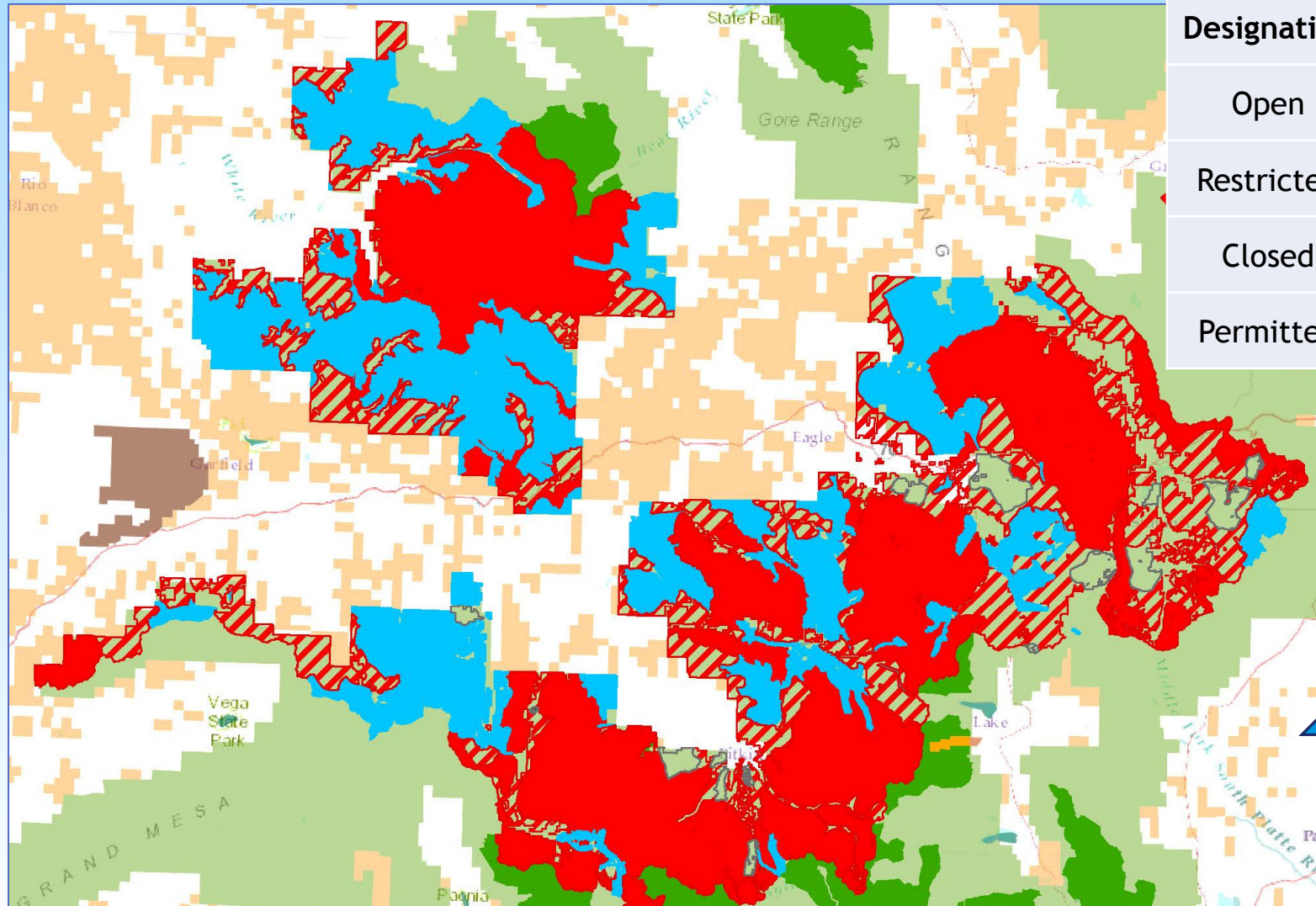


## 2005 Forest Plan Amendment

Area Name	Designation	Acres
Rabbit Ears Pass	Closed	33,295
Buffalo Pass	Restricted	3,801
Dry Lake	Closed	1,666



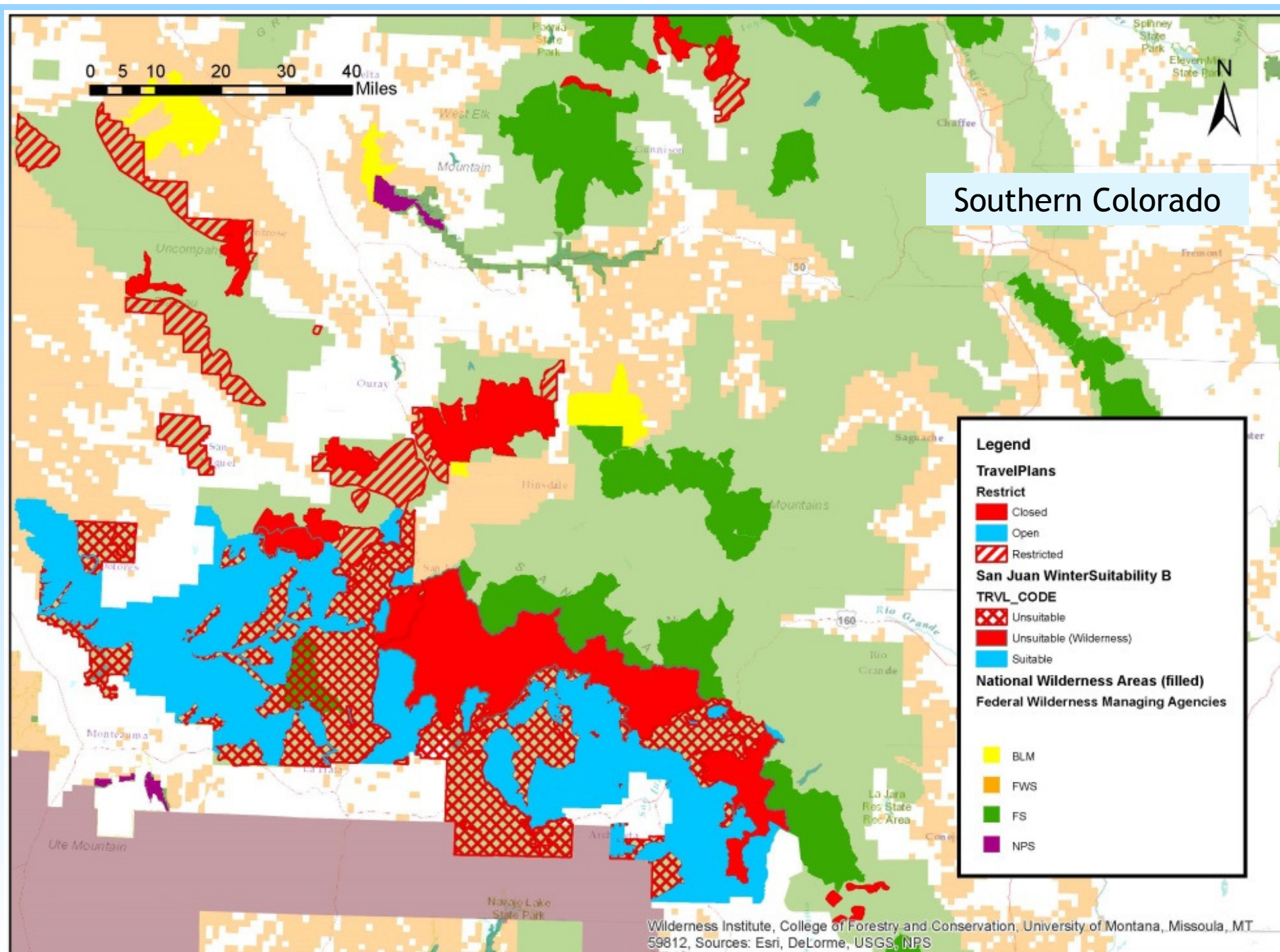
# White River National Forest



Designation	Acres
Open	695,723
Restricted	517,963
Closed	1,017,638
Permitted	54,907

Min.  
Snow  
Depth  
?







### San Juan NF

*2013 Suitability Study  
(closures not currently  
implemented)*

Unsuitable - 743,554

Wilderness - 424,426

Suitable - 926,649

### Rio Grande NF

*Cumbres/La Manga Pass, Wolf  
Creek Pass*

*Seasonal Wildlife Restrictions*

Closed - 14,390

Wilderness - 392,407

Restricted - 394

Open - 1,429,477

### Pike/San Isabel

*Currently unable to identify any  
decisions or maps that demonstrate  
these closures*

Closed - 163,039

Wilderness - 445,339

Open - 1,631,237

Uncompaghre

*2002 Winter Travel Plan*

Closed - 29,851

Wilderness - 136,635

Restricted - 249,181

Gunnison

*Crested Butte Area*

Closed - 28,452

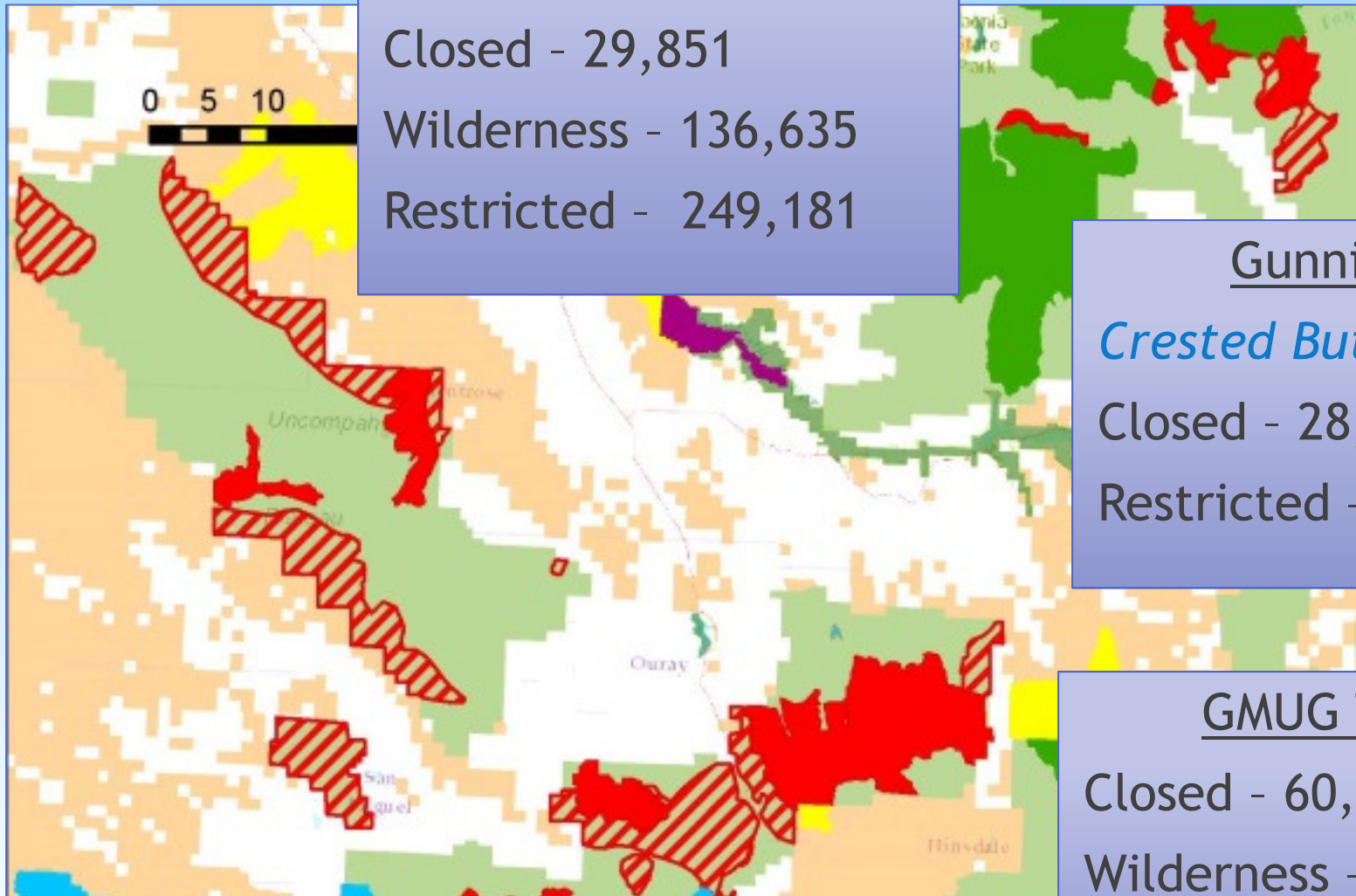
Restricted - 16,310

GMUG Total

Closed - 60,934

Wilderness - 553,680

Open - 2,349,684



# What's Next?

Analysis of which existing closures will meet new OSV rule requirements

Mapping Workshops

- Oct 15 Crested Butte
- Webinars coming soon!

[www.cmc.org/bsi](http://www.cmc.org/bsi)

Communication with local USFS district staff

Forest Planning - Rio Grande, GMUG