

Favorite Day Hike Places

I-70 North Side:

Exits 218, 216, Straight Creek and
related...

*Presented by Robbie and Durrie Monsma, Colorado
Mountain Club Denver Group Trip Leaders*

Webinar Objectives

- This is an orientation to a typical **Day Trip** area in the Front Range
- This is an experiment – worthwhile doing?
- We like this area because it is near the Continental Divide, and wraps around the area
- Identify the trails and mountains
- Great wildflower places
- Winter warnings
- Access to the Continental Divide trail
- Freeway exit info and parking
- Where to get orientation info quickly
- The south side is just as great.

Geographic Orientation

Front Range Clear Creek County (with one trail in Summit Co., other side of the
Eisenhower Tunnel)

Arapaho National Forest - Arapaho and Roosevelt National

Forests: <http://www.fs.usda.gov/activity/arp/recreation/hiking>

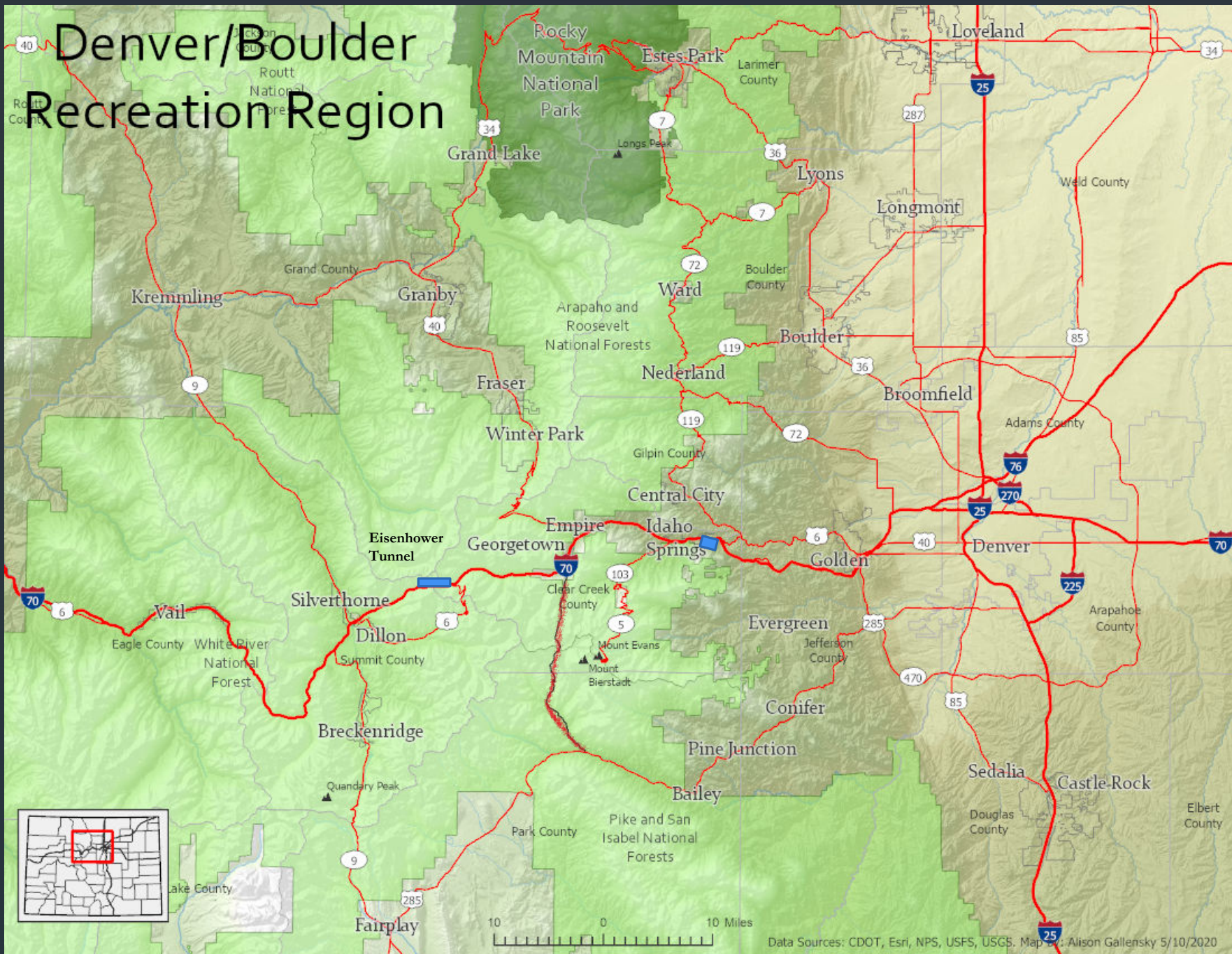
Clear Creek Ranger District 303-567-4382

Sheriff Clear Creek County 303-679-2376

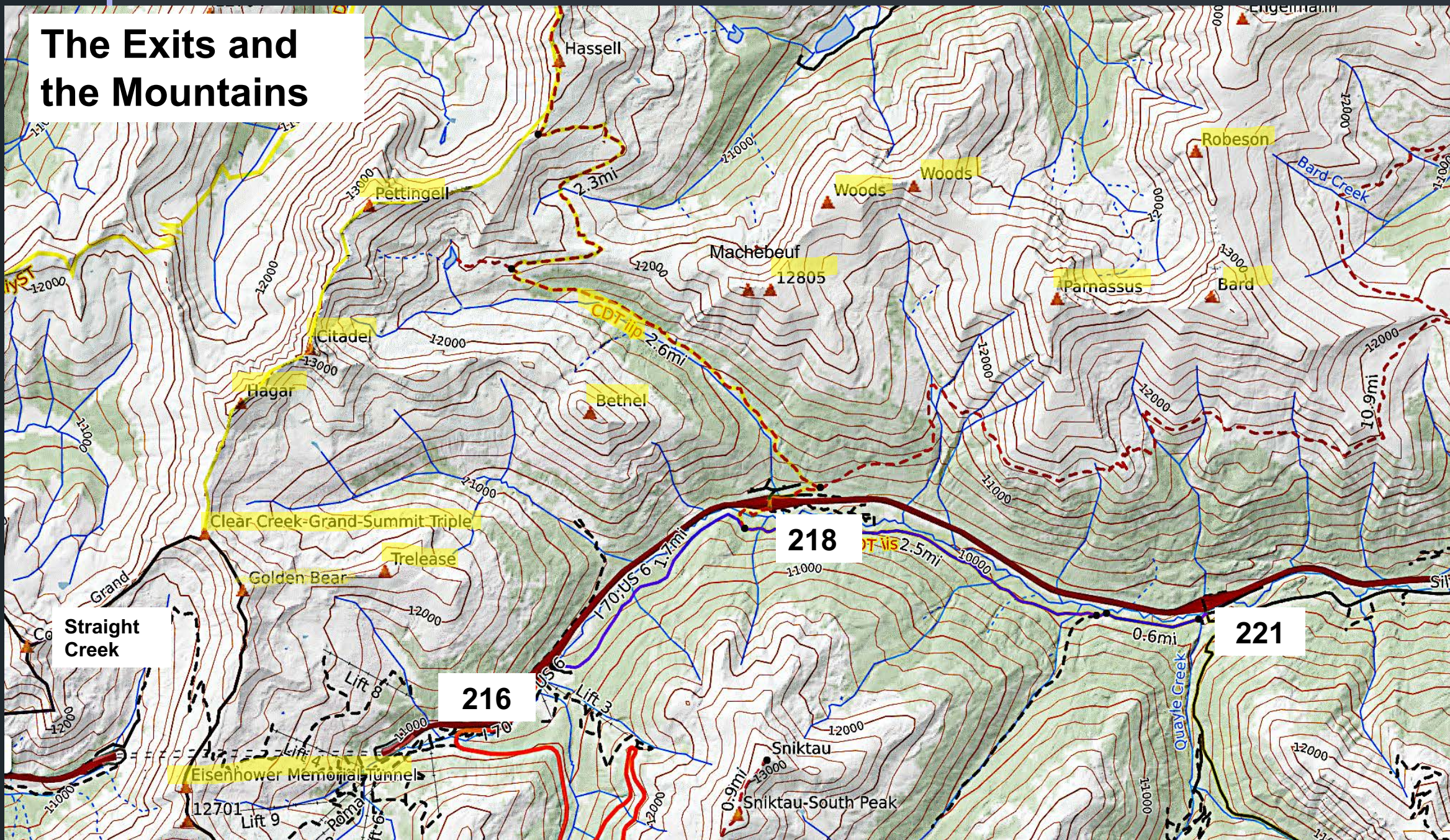
Suggested Meet Place: Woolly Mammoth Parking Lot <https://www.cmcdenver.org/?s=locations>

Suggested Comfort Stop: Sinclair Downieville Exit 234 Dumont, CO 80436, open 24 hrs.

Nat Geo TI Map: #104



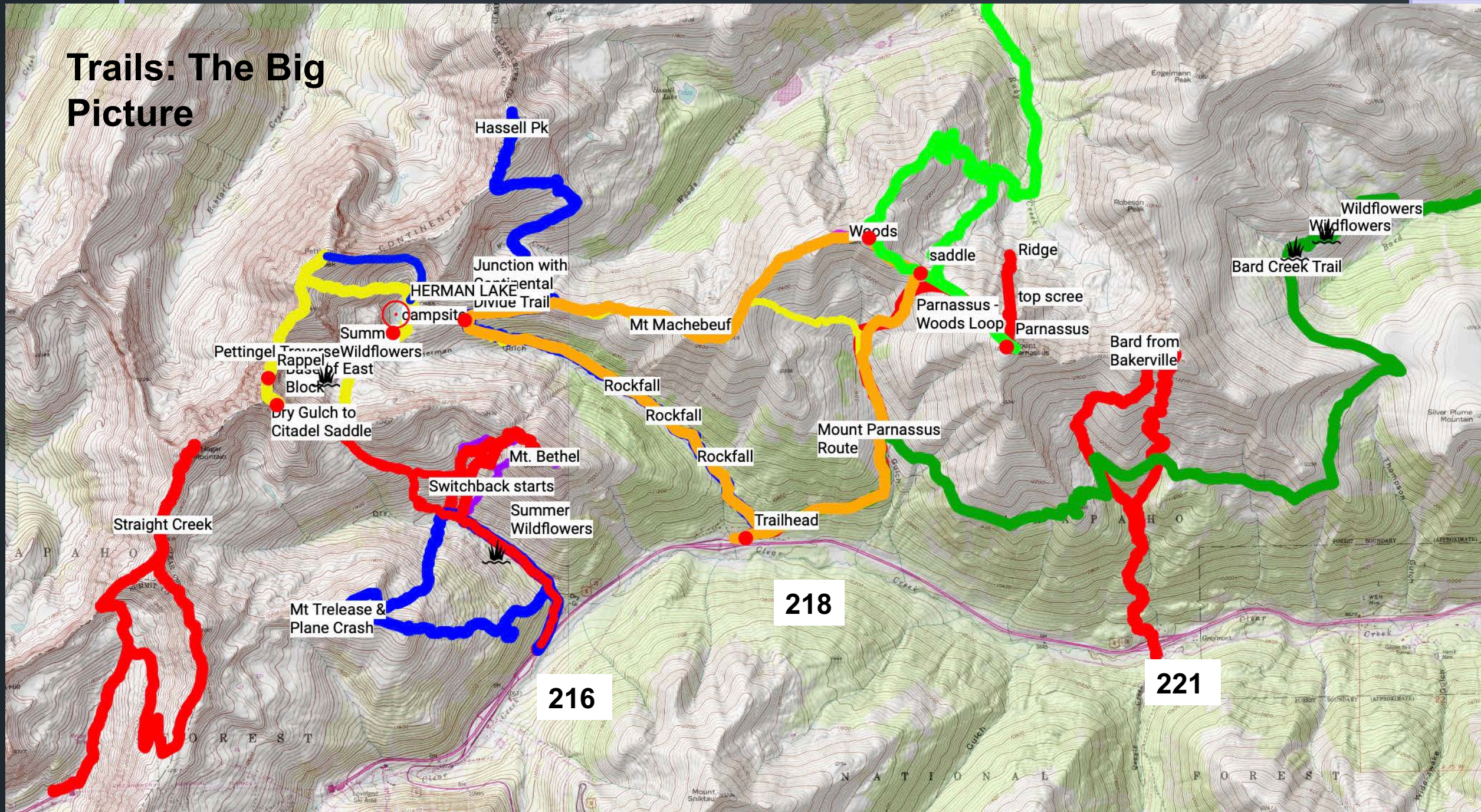
The Exits and the Mountains





Loveland
Ski Area
looking
west

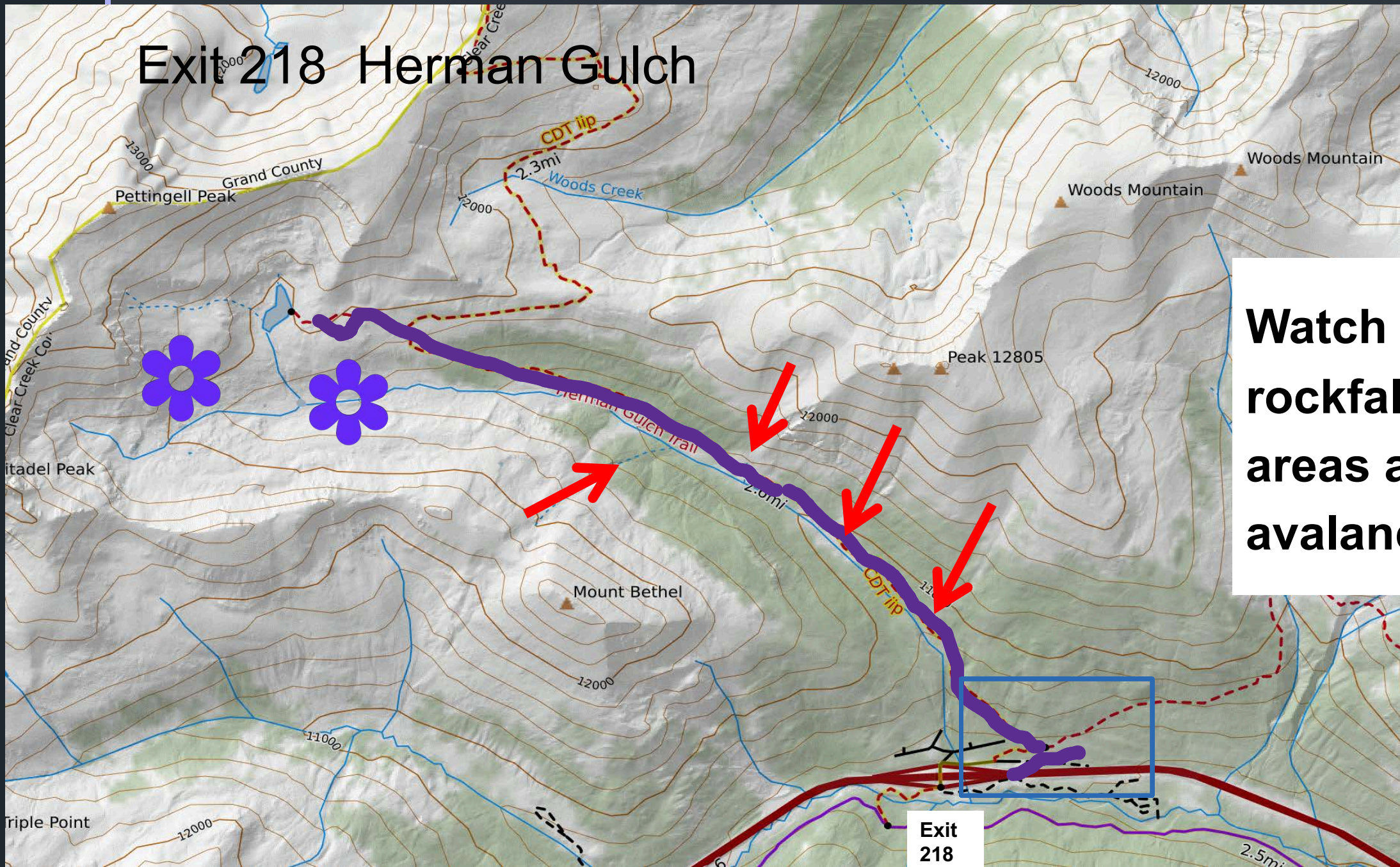
Trails: The Big Picture



The Trail Statistics

Name	Trail Access	TH	CMC Hike Rating	Hike Miles	Gain	on/off trail	Starting elev	Max/End elev
Dry Gulch Tr	Exit 216	Dry Gulch	Easy A	3	616	on/off	10391	11155
Mt Trelease	Exit 217	Dry Gulch	Diff A	5	1610	on/off	10391	12461
Watrous Gulch Tr	Exit 218	Herman Gulch	Easy B	6	1500	on	10300	12600
Herman Gulch Tr	Exit 218	Herman Gulch	Mod B	7	2000	on	10300	11987
Straight Creek Tr	Right, immediately after Eisenhower Tunnel	Straight Creek	Mod B	7	2000	on/off	10900	13000
Woods (w/o Parnassus)	Exit 218	Herman Gulch	Diff B, scramble	6.5	2540	on/off	10300	12490
Mt Bethel	Exit 216	Dry Gulch	Mod C	6.5	2900	on/off	10391	12705
Hagar Mtn from Straight Creek	Exit 216	Dry Gulch	Scramble	7.25	2990	on/off	10391	13068
Hagar Mtn from Dry Gulch	Exit 216	Dry Gulch	Hike/ Scramble	8	3000	on/off	10391	13068
Mt. Machebeuf	Exit 218	Herman Gulch	Mod C	7	2600	on/off	10300	12805
Pettingell Peak (East Ridge)	Exit 218	Herman Gulch	Hike/ Scramble	8.75	3300	off	10300	13600
The Citadel peak	Exit 218 or 216	Herman Gulch or I-70 Exit 216	Diff C, Scramble	9	3389	on/off	10600	13294
Woods Mountain (w/ Parnassus)	Exit 218	Herman Gulch	Diff B, Scramble	7	3700	on/off	10300	13600
Pettingell Peak (w/ The Citadel)	Exit 218 or 216	Herman Gulch or I-70 Exit 216	Scramble, +/-or Rope	9.4	3800	off	10391	13600
Bard Creek Tr	Exit 218 or Empire	Herman Gulch	Mod C	13/15	2425 or 3329	on	10300	12400

Exit 218 Herman Gulch



**Watch for
rockfall
areas and
avalanche**



**Also the
CDT at
this point**



**CDT
Junction, a
bit before
the lake**



At Herman
Lake,
looking
over to The
Citadel and
Pettingell
Peak



From the high
Herman/CDT
trail, looking
toward the
peaks

Summer Trail





Fall Trail

A group of five skiers is seen from behind, ascending a vast, snow-covered mountain slope. They are wearing winter gear, including helmets, jackets, and backpacks, and using ski poles. The terrain is a wide, open expanse of snow with some small, dark patches of vegetation visible in the distance. The sky is overcast and grey.

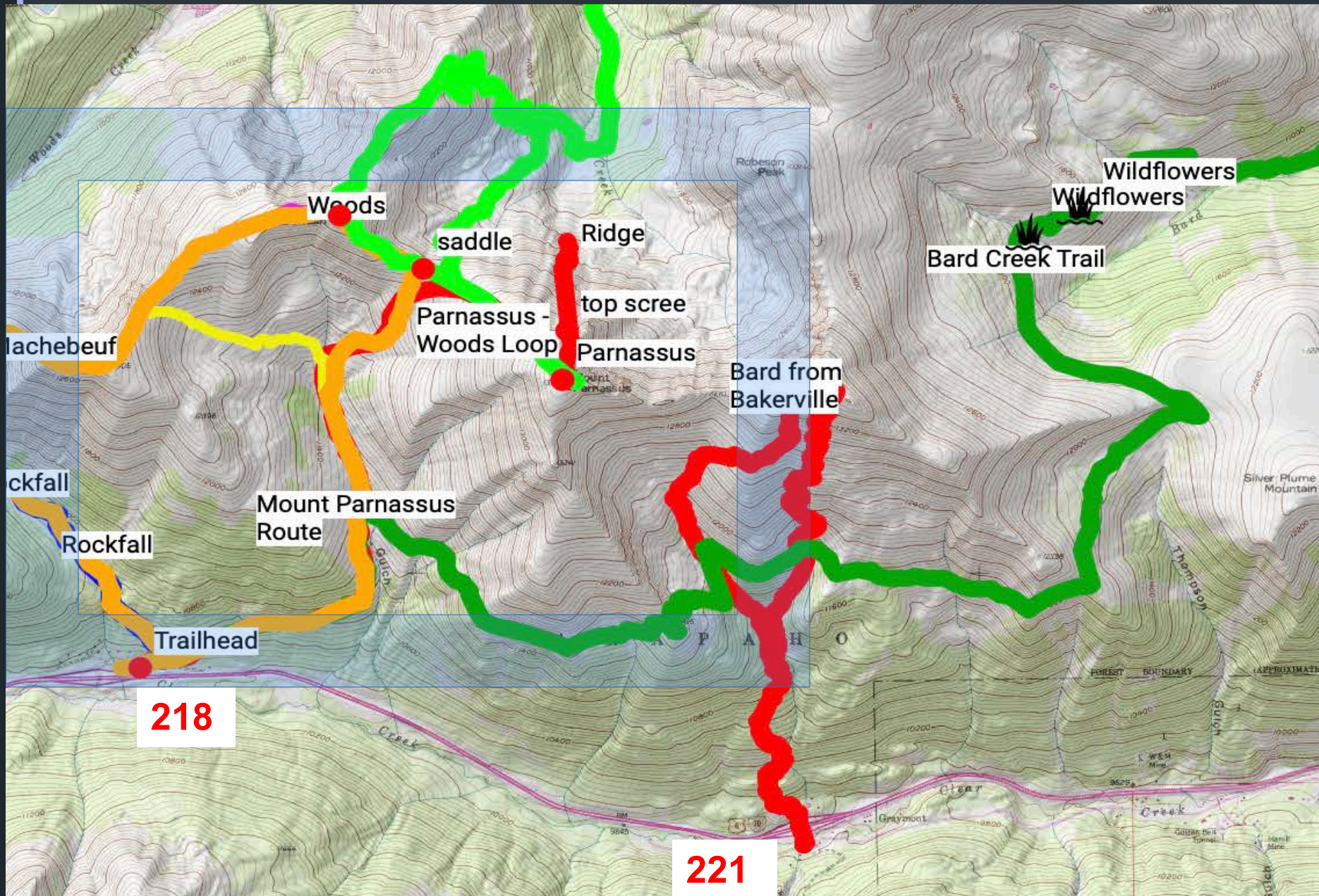
Winter in the Gulch

Take CMC's
Avalanche
Terrain
Avoidance
School

Learn how to
use the CO
Avalanche
Information
Center
("CAIC")
website

The Watrous - Herman Junction









You get to
use your
snowshoe
elevators!

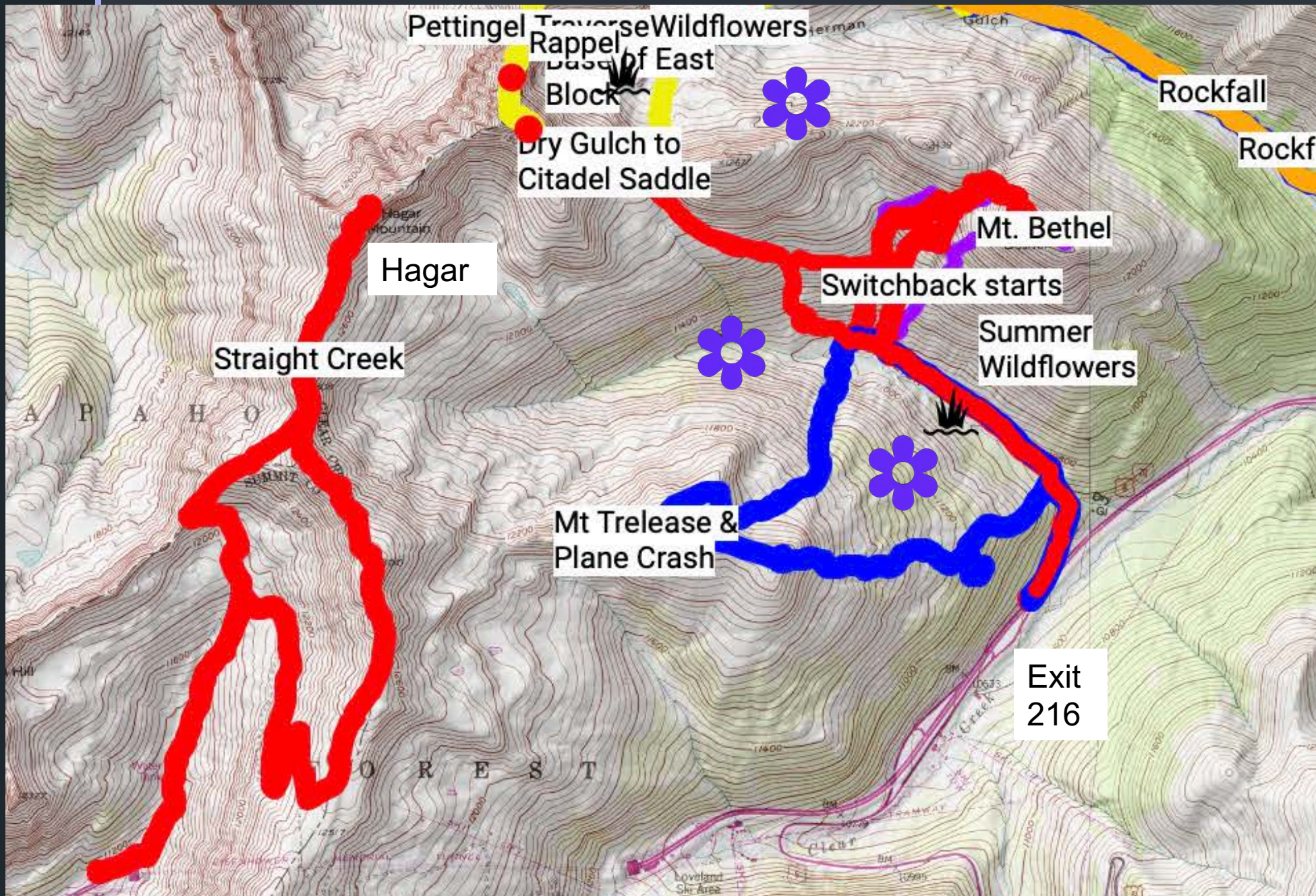


Yikes!





Looking
back down
Dry Gulch
toward the
TH



Trelease--
Wichita
State
Crash

Great Flowers



Atop Mt. Bethel Over Herman Gulch





Looking
SE Down
Herman
Gulch
from The
Citadel –
Bethel
Saddle



Looking
NW up
toward
The
Citadel
from Dry
Gulch



Coming back
down The
Citadel
Shoulder to
Dry Gulch

If you plan
to go to the
top, wear a
helmet!

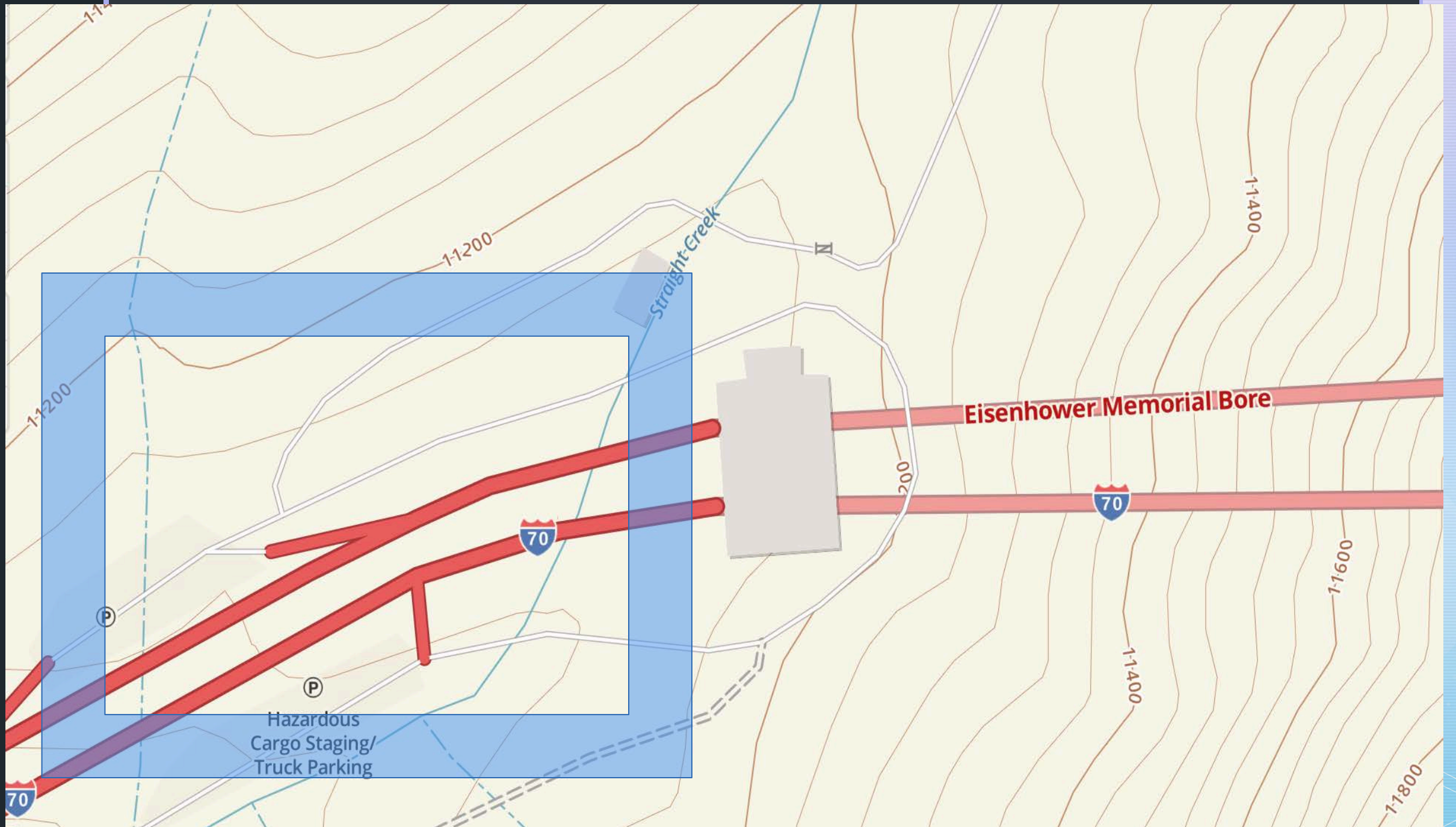


Lunch
on the
Citadel
shoulder



West Side of
the E. Tunnel

Looking
S. down
Straight
Creek







The Citadel – Pettingell Traverse

Requires
ropes if
making
the full
loop

Frequent
ACS
High
Peak
Climb



The NON-
roped
route up
Pettingell
Peak starts
behind the
people



Bard
Creek
Trail

Note the terrible dirt road at the east TH





Around Mt
Parnassus
on this
narrow trail,
high above
I-70











Where to Get Trip Planning Information

Hiking Trail Websites

The following websites contain information on hiking trails, directions to the trailhead, mileage, elevation gain, and other trail conditions. Some require an annual fee to access the complete set of functions, including downloadable gpx tracks. All have phone apps that will sync with your account.

Many of them are demonstrated and explained at CMC's You Tube Channel.

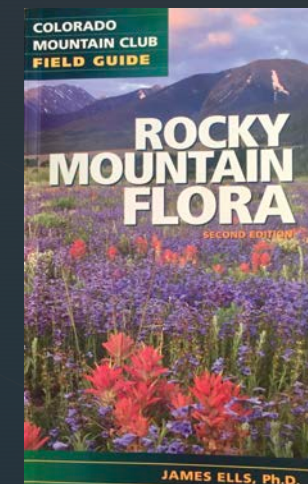
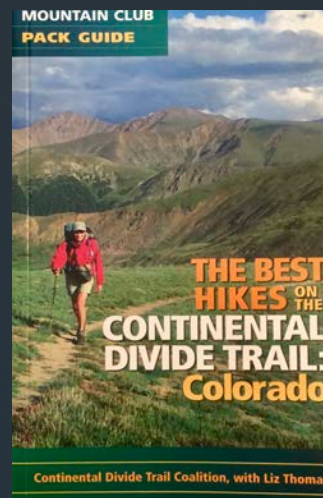
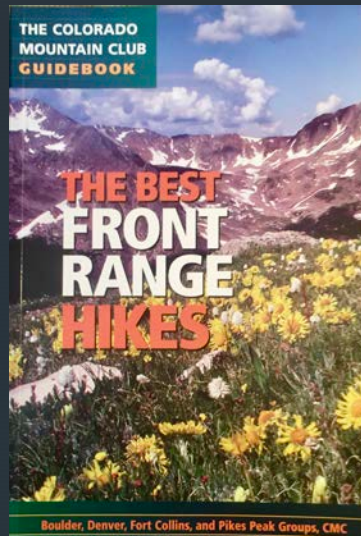
- www.alltrails.com
- trails.colorado.gov (“CoTrex”)
- <https://www.gaiagps.com>
- <https://caltopo.com/about>
- www.14ers.com
- www.protrails.com
- www.summitpost.org

Official National Forest Sites

- U.S. Forest Service: https://www.fs.fed.us/recreation/map/state_list.shtml
- Arapaho and Roosevelt National Forests: <http://www.fs.usda.gov/activity/arp/recreation/hiking>

CMC Press: <https://cmcpres.org>

- Members get 20% off book purchases





Bard Creek
trail east side

Thank You!

- Questions?
- Contact the Denver
Group Member
Initiatives Committee at
cmcdgdmic@gmail.com