



Don't Miss These Upcoming Activities

Shelf Road – April 1st

This trip is intended for Colorado Springs / PPG members! I have met so many people from around the state, but I'd like to get to know PPG Members specifically.

We will head down Friday night to a group campsite at Shelf Road. We'll plan the area to climb Saturday and if we need to split into groups depending on overall group size.

The real fun will be Saturday night potluck. I ask that everyone bring a dish to share, along with their own plate, silverware and cups. Let's have a feast by the fire.

Sunday is day two of climbing, we'll do it all again the next day. Perhaps split into different groups and climb in different areas.

Sign up online at cmc.org.

Heizer—Explore a Little Known Trail

This trip is a combined Denver and Pikes Peak Group trip focused on "Bobcat" hikers. We will park vehicles at the Barr Trailhead and park near the Heizer Trailhead on Friday May 6th. Expect a moderate/slow hiking pace for this 10-hour trip.

We will climb the Heizer trail as it goes up relentlessly from Cascade to Cascade Mtn (2.6 miles uphill). Then we will descend into the valley beyond, taking the trail takes you to the Manitou Reservoir. We will loop back to Barr trail after 6.2 miles. Once we reach Barr trail we have an option of going 1.6 mi to Barr camp, visit for 1/2 hr and then back to the trail junction we started at, 5 mi from Barr trailhead. We will then walk down Barr trail to the trailhead by Cog Railway. Sign up online at cmc.org.

Pikes Peak Group 103rd Anniversary Party

Come celebrate CMC Pikes Peak's anniversary with us at Mash Mechanix! Socialize with fellow members of CMC Pikes Peak and enjoy food and drink as we toast to 103 years.

May 1st 5-8pm, Mash Mechanix, 429 E Pikes Peak Ave.

Watch for anniversary-related trips April 30th – May 1st.

2022 Pikes Peak Birding and Nature Festival

The 7th Pikes Peak Birding and Nature Festival is a joint effort between numerous local public, private, and non-profit organizations to offer an ecotourism birding and nature festival that promotes conservation and education and explores the natural and agricultural heritage resources of the Pikes Peak Region.

2022

Pikes Peak Birding and Nature Festival



May 13, 14, 15

Early Bird Registration Opens March 26

pikespeakbirdingandnaturefestival.org

Your PPG Council

Chair – David Kuenzli
813-465-4716, navsareneverlost@gmail.com

Past Chair – Kristen Buckland
419-260-7807, buckie06@hotmail.com

ARCPro Director – Scott Kime
719-235-0939, scott.kime@live.com

BMS Co-Directors – Joe Preiss
719-337-9331, zmjwp@gmail.com,
Jason Kosola
307-277-9445, jasonkosola@gmail.com

Conservation – Tom Mowle
719-216-3932, tommowle@yahoo.com

Education & Training – Eric Hunter
719-266-9647, EHunterCMC@gmail.com

Equipment Manager – Derek Sardinta
719-761-7051, DASardinta@gmail.com

Membership – Dean Waits
281-352-2236, dwaits24@gmail.com

Newsletter – Dave Anderson
719-484-9069, danderso@uccs.edu

Outings – Audrey Burkart
719-510-0481, arburkart10@ole.augie.edu

Programs – Anna Revolinsky
530-957-2960, arevolinsky1@gmail.com

Public Relations – Alan Bridges
850-687-3041, mtnklmbr@prodigy.net

Safety & Leadership – Mike Cromwell
858-395-5986, cromwellc@comcast.net

Secretary – Sarah Hettenbach
785-226-3176, hettenbach.s@gmail.com

Treasurer & State Council Representative –
Glenn Barr, 719-244-3502,
gjb2000@gmail.com

50+ – Christie Lee
719-243-1821, christie80905@gmail.com

At Large:

Bill Allen
719-660-1339, aspenperio@aol.com

Britt Jones
719-661-4777, britt@globalreality.biz

Greg Long (HAMS)
719-659-0345, at_90@yahoo.com

Paul Schoell
719-440-7777, 4paul2@gmail.com

Interested in serving on the Pikes Peak Group
Council? Please contact the Chair.

Welcome New Members!

Matthew Coble	Erica Lingenfield
Shannon Coble	Jasmine Mecheri
Will Enicks	Ashley Pintler
Steven Hannum	Kerry Thunberg



Member Discounts

Adventure Medical Kits

Ajax Bike and Sport

American Mountaineering Museum

Atrevida Beer Co (was Great Storm)

Bentgate

Breckenridge Nordic Center

City Rock

Friction Labs

Frisco Nordic Center

Gearonimo

Gold Camp Brewing

Golden Bike Shop

Ken's Anglers

Lumiere Telluride

Moosejaw

Mountain Chalet

Mountain Equipment Recyclers

Mountainsmith

ProMotive.com

R&W Rope

ROCK'n & JAM'n

Rocky Bob's Fly Fishing Rods

Summit Terragraphics

The Custom Foot

The Mountaineers Books

The Trailhead

TrailRunner Magazine

Vagabond Ranch Huts

Wilderness Exchange Unlimited



The Pikes Peak Group in Photos

Section 16 Leader in Training Hike for Sara Gordon



L-R: Greg Long, (Leader), Sara Gordon, (New Leader), Richard Legault, Ute Szilard, Barbara Gutow, Missy Starks and Bill Smith.

Blodgett Peak Leader in Training Hike for Sean Williams



Sean put together a really nice loop. Leg 1 was up the trail to the summit of Blodgett Peak. Leg 2 headed south along the ridge tops, tagging a few local high points along the way. There were a few inches of consolidated snow up top. Leg 3 was down a trail back into Blodgett Open Space. This last leg was slightly less steep and slippery than the normal route. We accomplished the 6-mile trip in exactly 6 hours as Sean had planned. At lunch after the hike we recounted this glorious loop! The weather was a bit breezy in the morning, but diminished to zero as the day went on. Sunny skies and cool temperatures.

Mt Muscoco/Cutler Hike



L-R: Gabby Watkins, Audrey Burkart, leader, John Watkins, Zephyr Smith, and Megan and Ryan Kliesner. Doggies Gustav, Zazu, and Loki.
Photo credit Dean Waits.

Barney's Dome on Cascade Trio Hike



L-R: Eric Land, Kim Sulak (guest), Sean Williams, Pauline Knott, and Lisa Kroleski (guest).

Spruce Mountain Open Space



L-R: Monica O., Marjorie G., Sarah B., Yarko T, and Glenn B.

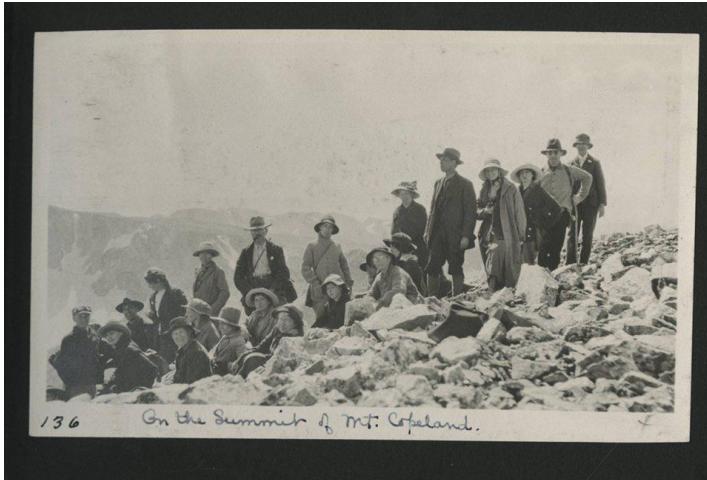
Mount Princeton, 2022

Christie Lee led the Mt. Princeton Hot Springs trip Feb 25-27, and we had about 20 members and guests attend four different snowshoe/X-C hikes between Friday and Sunday.



Happy Birthday – Pikes Peak Group 103 Years Young!

It's birthday time for the Pikes Peak Group and we will be celebrating this wonderful occasion from April 30 through May 1. There will be hikes of different types and Sunday afternoon we will have a social event. Planning is now underway, so stay tuned. Wow! 103 years but did you ever wonder how we started?



Strangely enough as we've recently experienced, it was after the great influenza epidemic in 1918. From a newspaper article by Dr Lloyd Shaw, Superintendent of Cheyenne Mountain High School and founder of the Cheyenne Mountain Club at the high school. "When at last we were allowed to open, we were warned that we must be careful that we didn't spread the disease by having too intimate or too frequent indoor parties. Having a group of young people who loved to hike (it was unheard of for a high school lad to own a car), I decided to limit our parties more or less to outdoor gatherings; and we organized the Cheyenne Mountain Club."

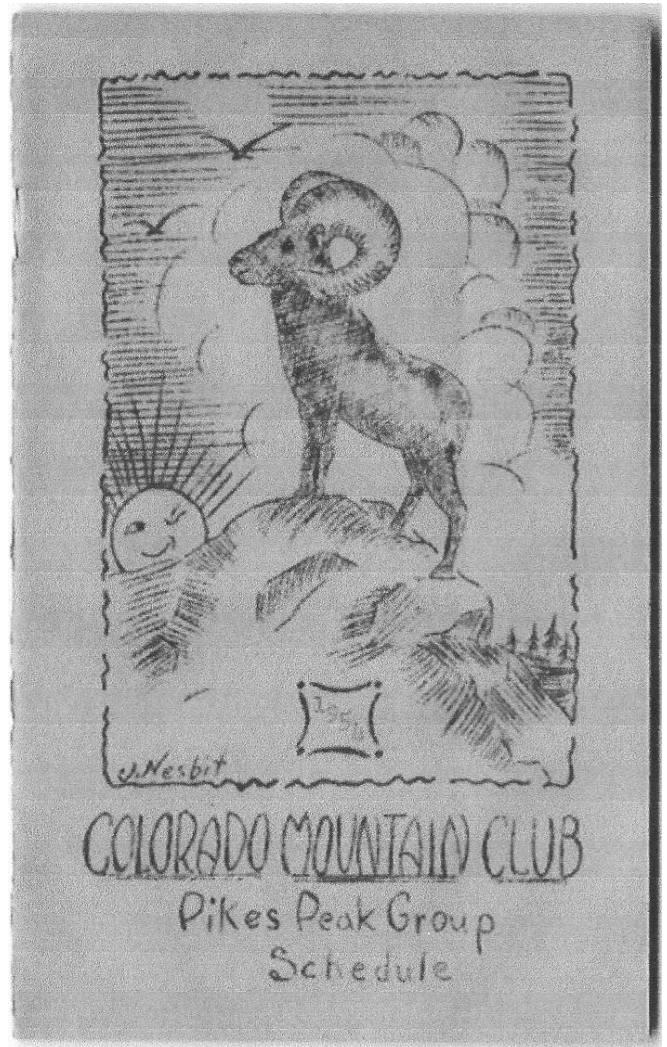
They started having hikes to high peaks and along local trails. Their first official trip was to hike up Cheyenne Mountain where they eventually put a summit register. They pooled resources and purchased a cabin in South Cheyenne Canon overlooking the creek next to a beautiful little waterfall. There was no road to the cabin and as they wanted to add some amenities, the students would carry lumber, mattresses, and supplies. Riding the street car to Seven Falls where they would hike up its stairs with their loads and on to the cabin having to cross the creek several times.

Some of their adult club members were also in the Colorado Mountain Club and discussions started of combining the clubs. Dr Shaw met with some Colorado Mountain Club members and it was decided to unite.

This is from the "Trails and Timberline", Number 14, June 1919:

"Tuesday, May 6th, 1919, may well be remembered in the history of the Colorado Mountain Club, for on that date consolidation of the Cheyenne Mountain Club of Colorado Springs with the Colorado Mountain Club was affected, and with the union of the two-organizations added strength comes to the state organization, not only numerically but by virtue of the high personnel of the officers, directors, and members of the younger organization.

The club in Colorado Springs will be known as the Pikes Peak Branch of the Colorado Mountain Club. Its present members will automatically become members of the Colorado Mountain Club with full privileges. They will elect its own local officers, and, for the present, at least, two-thirds of its membership dues, which are \$3 per year will remain in the hands of their local treasurer to be spent in local activities."



The Pikes Peak Group was the second to join Colorado Mountain Club. The new group explored and built trails in the canyons and hills near Colorado Springs and, despite poor roads and a lack of cars, made trips to the Tarryall area

and the Sawatch Mountains. It sponsored a wildflower show every July for 20 years.

One very interesting trip was on Aug 27-28, 1920 as members from Denver caught the train for Colorado Springs and then a street car to S. Cheyenne Canon, hike to a cabin of the Cheyenne Mountaineers. Sunday climb Mt Rosa returning down N. Cheyenne Canon in time for the early evening train to Denver. Take blankets and carry lunch for Sunday, also plate, cup, knife, fork and spoon. Lloyd Shaw is the leader and will furnish details. Total expense, about \$6.00.

Some early members were Ed and Fred Morath along with Harry Standley, three of the founding members of the AdAmAn Club which started in 1922.



By the 1930s, its membership down to 43 members who were unhappy paying CMC dues. The club nearly broke away, opting by one vote to stay with the organization, according to the book. "The Colorado Mountain Club — The First 75 Years of a Highly Individual Corporation."

In the January 1954 minutes the club met and planned hikes for the entire year. This had been done previously and continued for many years. Schedules were mailed out to members. In the May 1980 minutes, it was suggested to get a computer printout for the treasurer. Interesting to look at the phone numbers: ME 4-0309 for one of the club board members.

On its 50th birthday the CMC climbed all 54 - 14er's. The PPG led climbs all around the state and club chairman Lee Lyon led members up Pikes Peak by way of the Cog Railway during moonlight and reached the top at dawn.

In 2012, the 100th year anniversary was celebrated with speakers at Colorado College, tables with things of interest, and again the overall event was to climb all 53 - 14er's, Bross excluded, over the weekend of Sept 6-7. The PPG's assigned peak was Handies with Bill Houghton as trip leader. Another group was short on members so we were to also climb Sunshine and Redcloud. Just imagine all the dots that need to be connected for this to happen, state wide!

The CMC and the Pikes Peak Group have such a rich history so, continue making great memories, friendships, new accomplishments and reaching your goals. Have fun celebrating PPG's 103 Birthday.

Upcoming Pikes Peak Group Classes

PPG Basic Mountaineering School - Land Navigation

Starts April 7

Prerequisite: Wilderness Fundamentals. There are two class lectures. Our discussions include maps, compass, orienteering, estimating distance, interpreting map symbols, properly reading topo contour lines, learning about declination, sighting, taking a bearing, and route finding using all of these concepts. You'll also participate in class exercises using a map and compass. Students must participate in a PPG trip where they are afforded the opportunity to practice and demonstrate their land navigation skills. Cost: \$35.

PPG Wilderness First Aid (WFA) with CPR/AED

Starts April 21

This eighteen-hour ECSI accredited course presents dynamic instruction devoted to teaching you how to respond to medical emergencies in remote settings where definitive medical care is not readily available and to think creatively in order to make the right decisions. Two evening classroom presentations are followed by an outside field day consisting of hands-on training and realistic scenarios on a variety of medical situations that may be encountered in the wilderness setting (including CPR) where calling 911 is not an option. This course satisfies a requirement for trip leaders. You will receive your WFA with adult CPR/AED certification card emailed to you upon satisfactory course completion. Satisfactory course completion encompasses the attendance policy, online requirement, a score of at least 75% on the multiple choice test, and demonstrating practical knowledge. Cost: \$100 for Leaders, \$120 for PPG members, and \$130 for all others.

PPG ARCPro Intermediate Self-Rescue Class

Starts April 23

This is our next-level Self-Rescue class for those who have completed the Introduction to Self-Rescue class. We will review the basic skills from the Intro class, then move into more advanced self-rescue skills- including skills applicable to

multipitch climbing, such as lowering from a top belay, hauling methods, and multipitch tandem rappels. Prerequisites: Students should have already taken BMS Rock climbing and Introduction to Self-Rescue, or have equivalent skills—contact the leader if you have any questions about your suitability for this class. Cost: \$65 for Leaders and \$95 for all others.

PPG GPS Basics Class

Starts May 9

GPS Basics offers students who already own handheld GPS receivers the opportunity to learn more about how GPS works, how to plan an adventure online, how to move that information to a GPS receiver, and how to use the GPS to help with route finding, trip progress, reporting locations in an emergency, and capturing key data for a trip report to share with others. Key terms we will explore: Global Positioning System, satellites, waypoints, routes, tracks, importing, exporting, .gpx files, WAAS, Caltopo, BaseCamp, trip computer, GLONASS, Geocaching, coordinates, UTM, position, velocity, circle of error, satellite geometry, and others. This class is intended for those who already have a GPS and want to learn to use it more effectively. Class has one lecture/presentation, homework (field day GPS prep), and one field day. Cost: Free.

PPG Basic Mountaineering School – Basic rock Climbing

Starts May 16

The BMS Basic Rock Climbing consists of one class lecture, an active skills practice session, and two field days. Our discussions include climbing gear, rating a climb, different types of rock climbing, climbing knots, rope management including coiling, care and inspection, anchors, communications, climbing techniques, belaying, rappelling, and building an auto-block. Prerequisite: Wilderness Fundamentals. Cost: \$65 for PPG members, \$75 for all others.

PPG ARCPro Traditional Lead Climbing Class

Starts May 21

The Traditional Lead Climbing Class is part of the PPG Advanced Rock Climbing Program. In this class, students will be introduced to the principles and techniques of placing gear on a “traditional” rock climb. This class builds upon many of the concepts and skills taught in the PPG ARCPro Trad Gear and Anchors Class. By the end of the final field session, students will perform “mock” trad leads- backed up by a top-rope belay. Students will be evaluated for their gear placements and their understanding of key principles of how to ensure safety while leading a traditional climb. Prerequisites: Successful completion of BMS Rock Climbing, the Sport Leading Class, and the PPG ARCPro Trad Gear and Anchors class, or equivalent skills and approval from course leader. Cost: \$65 for Leaders, \$95 for all others.

April Pikes Peak Group Trips

Shelf Road Climbing - April Fools

Friday, 4/1/2022

Sport Lead

Leader: Joseph Petsche, 734-678-8468, joebiker@gmail.com

Trail Mileage 2, Elevation Gain 200, Driving Distance 120. Location: Shelf Road!! 1000s of routes, which do you choose? All members should be proficient at tying in and belaying on a top rope. Please specify this in the notes when registering—if you are a capable belayer of top rope or lead climbing. Details: I will arrive evening on Friday April 1st. I've arranged for a group camp site for all to stay. Cost per person will be \$5 payable directly to the trip leader (to cover camping expenses). We will arrange into groups Friday night or Saturday morning during breakfast. We will determine what area we will head and who will be setting up routes. Saturday night taco bar! We will have a group dinner with all the fixin's. Please be prepared to contribute food/drink to dinner. I will send out a spreadsheet with invites in late March. Sign up doesn't guarantee acceptance to the trip. Invite and payment will confirm your spot. Lead climbers will be accepted first, then top rope belayers. This is to ensure we can set up enough ropes, etc. Folks must bring own gear, ropes, draws, stick clips, etc.

Nordic Ski Breckenridge Nordic Center

Saturday, 4/2/2022

Moderate II

Leader: Eric Hunter, 719-266-9647, EHunterCMC@gmail.com

Trail Mileage 10, Elevation Gain 500, Driving Distance 260. Location: Breckenridge Nordic Center. Details: For those who recently completed the Pikes Peak Group Intro to Backcountry Ski Course, this is a great progression to continue to build your skills. Come spend the day honing your skate or classic track skiing skills on the groomed trails of this fantastic Nordic Center. Full rentals available at the center. All skill levels welcome. We will avoid avalanche terrain. [Nordic Center map](#). Register with leader.

Mt Cutler Overlook (Dog Friendly)

Wednesday, 4/6/2022

Moderate B

Leader: Sara Gordon, 719-749-8444, sara.flashgordon@gmail.com

Trail Mileage 6, Elevation Gain 800. Location: North Cheyenne Canon. Meet at the Starsmore Discovery Center, 2120 S Cheyenne Cañon Rd, Colorado Springs, CO 80906. Details: Park in main lot next to Starsmore center. Meet in front of Starsmore Discovery Center. Head up Lower Columbine trail, part of the Middle Columbine trail, and split off along the

new Creekside trail to get to the traditional Mount Cutler trailhead. Hike up the Mount Cutler trailhead up to the overlook at 7,050' (Mt Culter = 7,200'). Great location to explore, eat a snack, and then head back down. Bring water, snacks, poles (if desired), dog waste bags (if bringing a fur companion – be prepared to pack out dog waste), wind/weather protection; and (of course) your 10 essentials. As traditional Colorado hiking goes, there are a lot of areas with scree that can be slippery in areas. Dogs are welcome to come but must be leashed. Notes: Spring conditions can be 'iffy'; this trip plans to still go if it snows (might need micro-traction/spikes). Email will be sent 1 or 2 days prior to event date.

CityROCK Climb Night

Wednesday, 4/6/2022

Leader: Audrey Burkart, 719-510-0481, arburkart10@ole.augie.edu

Location: CityROCK Climbing Center, 21 North Nevada Avenue, Colorado Springs, CO 80903. Details: Join us for Colorado Springs CMC Climb Nights Series: CityROCK. Come on out anytime from 4:00 - 6:00 pm! Come on down to Colorado Springs for an evening of climbing, beer, friends, and fun. Members that sign up through the CMC website get \$15 tickets, and Non-members get tickets for \$20. If you are currently a member of CityROCK, no ticket fee applies. Just use your CityROCK membership to climb and build your CMC community! Notes: Sign up through the CMC website to reserve your spot, but CityROCK will be collecting payment at the door.

Barr Camp Overnight & Pikes Pk

Friday, 4/8/2022

Difficult C

Leader: Audrey Burkart, 719-510-0481, arburkart10@ole.augie.edu

Trail Mileage 26, Elevation Gain 7410, Driving Distance 7. Location: We will meet at the Safeway at 3275 W Colo Ave at 9 and carpool to Barr TH; parking is \$20/day which will be split by participants. Details: We will hike Barr Trail to Barr Camp on the flanks of Pikes Peak. 3700 feet elevation gain, 6.5 miles on Fri. This is 1/2 the way to the summit of Pikes Peak. We will overnight two nights at Barr Camp in a dormitory setting. If conditions permit we will attempt to summit Pikes Pk on Saturday (13 mi r/t), or if not hike in the area or you can hang out in the cabin. We will return Sunday morning to the TH by early afternoon. You will be asked about your winter climbing experience and conditioning if you attempt Pikes Peak. Breakfast is included in the reservation cost as well as bed, dinner is extra \$10, be sure to reserve your dinner meal, or it will be necessary to bring food, stove, etc. You must carry your sleeping bag, water purification, and other necessities. The cost is approximately \$45 / night for inside cabin and meals. Special dietary needs cannot be accommodated. You can also reserve a lean-to outdoors. They are warmer than you'd think, you would have your own space, and they would be a bit cheaper. Please go [here](#) for more information. After you have registered online w/CMC, please make your [Barr Camp reservation](#) directly. You are *not* signed up for this trip until you are signed up on both the CMC web and have a reservation at Barr Camp. This is open reservation and the public is free to reserve our date as well. More details to be sent to participants later. Covid vaccinations are a requirement for participants.

BC Ski Mayflower Gulch

Saturday, 4/9/2022

Moderate III

Leader: Eric Hunter, 719-266-9647, EHunterCMC@gmail.com

Trail Mileage 7, Elevation Gain 1500, Driving Distance 320. Location: Mayflower Gulch, TH, near Leadville, CO. Details: For those who recently completed the Pikes Peak Group Intro to Backcountry Ski Course, this is a great progression to continue to build your skills. This is a moderate out and back ski into Mayflower Gulch north of Fremont Pass. We will stay to the main road up to the historic cabins, have lunch, play on the slopes around the cabins, and return. We may explore some of the side roads along the way. NNN-BC cross-country gear will be okay, but cable binding backcountry gear is recommended. This trip is primarily intended for Pikes Peak and Pueblo Group members. All others will be waitlisted. Avalanche gear and Avalanche Level 1 training are required. Nat Geo Map 109. Register with leader.

Elder Phen Lollipop

Saturday, 4/9/2022

Easy A

Leader: Christie Lee, 719-243-1821, Christie80905@gmail.com

Trail Mileage 4.7, Elevation Gain 928. Location: We will meet at TH (off of Ed Lowe Road just outside of Woodland Park) at 8:30 a.m. TH: Catamount Recreation Area, 3168 Co Rd 28, Woodland Park, CO 80863. Details: Join us on a lovely hike on Elder Phen Lollipop. This is about a 4.7 mile round trip hike near Divide.

Lovell Gulch

Friday, 4/15/2022

Easy A

Leader: David Kuenzli, 813-465-4716, navsareneverlost@gmail.com

Trail Mileage 5, Elevation Gain 1200, Driving Distance 90. Location: Lovell Gulch Trail – USFS. Details: This is a dog-friendly evening hike and bushwhack around Lovell Gulch for the purpose of preparing for the PPG BMS Land Navigation field day. We'll be placing 10-12 orienteering markers at pre-designated locations. Start time should have us finishing by 6:00 pm and sunset but make sure you bring a headlamp. Optional beverages and bratwurst following hike. Register with Leader.

Snowshoe Tennessee Pass Narrow Gauge Railroad Bed

Saturday, 4/16/2022

Difficult BII

Leader: Eric Hunter, 719-266-9647, EHunterCMC@gmail.com

Trail Mileage 9, Elevation Gain 800, Driving Distance 300. Location: Pikes Peak Region. Details: This is a difficult loop hike on the old railroad bed that went over Tennessee Pass before the tunnel was cut in. The narrow gauge route was cut in 1881 and served the D&RG until the first of two standard gauge routes were cut in 200 ft below in 1890. This old narrow gauge route serves as a wonderful easy snowshoe with many trail options to the sides. We will then loop back using the Mitchell Creek trail system, which has some sustained climbing on snow making the trip difficult and long. We will avoid avalanche terrain. This trip is primarily intended for Pikes Peak and Pueblo Group members. All others will be waitlisted. Nat Geo Map 109. Register with leader.

PPG Anniversary - Storm Pk/B-17

Saturday, 4/30/2022

B

Leader: David Kuenzli, 813-465-4716, navsareneverlost@gmail.com

Trail Mileage 7, Elevation Gain 2400, Driving Distance 120. Location: Pike National Forest, Rampart Range Road, Rte 327. Details: This trip celebrates the Pikes Peak Group's 103rd Anniversary. PPG was established May 6, 1919. We'll hike a 7-mile loop to Storm Peak, then to a B-17 crash site, and back to parking. Storm Peak has a lot of prominence and has an open rocky top so it provides great views. It is a nice rock scramble to the top. There is a lot of wreckage still in place from the B-17 including the engines. Someone created a memorial out of one of the engines with the names, functions and ranks of the 10 or 11 men who perished in the crash. The wreckage is in very steep terrain with a lot of brush. The ridge above the crash site is very easy to navigate but the slope containing the wreckage is difficult. Long time PPG member Tony Eichstadt provided the beta for this trip. This trip is intended for PPG members to celebrate our anniversary. PPG members email me with your desire to attend and I'll roster you. Others interested may request attendance and will be wait listed until a few days prior. This is a dog friendly hike. I'll have Talus, my chocolate Labrador hiking buddy, with me.

PPG Anniversary - Hike to Cheyenne Mtn Club Cabin

Saturday, 4/30/2022

Moderate A

Leader: Dean Waits, 281-352-2236, dwaits24@gmail.com

Trail Mileage 7, Elevation Gain 700, Driving Distance 7. Location: Meet at the Safeway Parking Lot on 3275 W Colo Ave at 7:30. For those that would like to carpool we will drive to the Hub parking lot reached by driving up Gold Camp Rd. It's at the intersection of Gold Camp Rd and High Drive. Please wear a mask. If you would prefer not to carpool you can meet us at the Hub P/L at 8am. I will be in a dark blue Toyota 4Runner. Details: Let's hike to the Cheyenne Mountain Club's cabin site in South Cheyenne Canyon. This is where it all began for the Pikes Peak Group. Where students from the Cheyenne Mountain High School would go for weekend retreats. Dr. Lloyd Shaw would call the Jr and Sr classes into the auditorium. He told them they had 30 minutes to go home, pack a lunch and be back at the school for a hike to the cabin. They would hike up the stairs at Seven Falls and follow the trail to the cabin. From the Hub parking lot we will hike up the old Cripple Creek Short Line Railroad right of way, which is primarily a road, to a point and then onto a wooded trail to the cabin. There's not much left of the cabin but the sight over looking the canyon and creek is idyllic.

PPG Anniversary - Aiken Canyon Hike

Saturday, 4/30/2022

Easy A

Leader: Glenn Barr, 719-244-3502, gjb2000@gmail.com

Trail Mileage 6, Elevation Gain 1282, Driving Distance 30. Location: Aiken Canyon Loop Trail / Aiken Canyon Nature Preserve south of Colorado Springs. Trail Head Parking Lot Address: 3350 Turkey Canon Ranch Rd, Colorado Springs, CO 80926. [Google map](#). GPS Coordinates: 38°37'12.1"N 104°53'20.9"W or 38.620022, -104.889146. Details: This hike is to help celebrate the Pikes Peak Group's 103rd Anniversary! We will meet at the Aiken Canyon Loop Trailhead at 7:30am. This is a casual-paced 6-mile group social nature hike, and we will travel and take breaks as a group. The plan is to take the loop counterclockwise, leave the loop and hike up the canyon to the cabin ruins, return to the loop, climb to the overlook, return to the loop and continue back to the trailhead. Interpretive signs highlight important features along the trail. We will start at 6,437' and climb to a high point of 7,284' at the overlook. We will climb +1,282' and descend -1,279'. I do not know where the missing 3' went. See the Trip Leader's [Route Map](#). There is little shade along the trail in general, and we will encounter rocky areas with low brush and cactus—and maybe even a rattlesnake! While the trail is in good shape generally, it crosses many small stream beds which may hold water, mud, or ice depending on recent precipitation and temperatures. The ups and downs are gradual, except for the 0.2 miles up to and down from the overlook. Here the trail has lots of fine loose grit that can make footing a little slippery at times. We will be sure to slow down and spread out here. Aiken Canyon Trail is located in the Aiken Canyon Nature Preserve south of Colorado Springs. This 1600 acre preserve boasts large number of animals including more than 100 species of birds. Pets are prohibited on the trail. Detailed [Trail Description Narrative](#). The [Nature Conservancy Aiken Canyon Preserve](#).

Conservation and Stewardship

Horsethief Park Trail Work: June 18 & 19

Please sign up for trail stewardship on Trail 704, the one that leads from Hwy 67 to Horsethief Park and beyond to Sentinel Point, Pancake Rocks, and the Ring the Peak Trail!

It was recently discovered that a short section of trail crossed private property, so it needs to be rerouted before the owner blocks access. For the most part, this will be straightforward work, so it would be an excellent time to get back into trail work after COVID disruptions or to try it for the first time! We are hoping to do all the work on [Saturday June 18](#), with [Sunday June 19](#) scheduled to finish up as needed. Please sign up for both, but especially for Saturday!

This project is in partnership with Friends of the Peak.

Those of you who are not CMC members will also need to complete the [guest waiver](#). After you do, please send me the receipt for my records.

Crew Leader Training: April 30-May 1

Have you done lots of trail work under someone else's direction and now want to become a leader yourself? Tell people what to do? Inspire them to work harder? Spend less time swinging the tools yourself? Be responsible for the quality of the work when the project leader wanders by? Be at the top of Tom's list when he's looking for help on projects? 😊

Here's what you can do: The annual Pikes Peak Regional Crew Leader Training (PPRCLT) is an intensive weekend-long training for stewardship volunteers who are interested in becoming certified and active stewardship crew leaders. During the training, participants learn how to lead safe, successful trail projects and build upon basic trail construction and restoration skills. The training is hosted by TOSC, Rocky Mountain Field Institute and the City of Colorado Springs Parks, Recreation and Cultural Services Department. For more information, please visit [their site](#).

After the training, you will need to apprentice for a couple of crews in leadership, and I'd think the Horsethief Park work would qualify for that.

Tom Mowle, PPG Conservation

Trailhead Parking Update



Parking at the Palmer Lake trailhead is no longer free; it now costs \$5/day.

Pikes Pique

April, 2022 | No. 288

Pikes Pique is the monthly newsletter of the Pikes Peak Group of the Colorado Mountain Club. It is a forum for enhancing skills for backcountry travel in the Colorado mountains and communicating information, news, and upcoming events to members and interested parties.

The purpose of the CMC is to unite the energy, interest, and knowledge of the students and lovers of the mountains of Colorado; to collect and disseminate information regarding the Rocky Mountains on behalf of science, literature, art, recreation; to stimulate public interest in our mountain areas; to encourage the preservation of flora, fauna, and natural scenery; and to render readily accessible the alpine attractions of this region.

PIKES PEAK GROUP CONTACT INFORMATION:

CMC Pikes Peak Group
P.O. Box 2435
Colorado Springs, CO 80901
cmcppgrp@gmail.com
[CMC PPG web page](#)

CLASSIFIED ADVERTISING

Members:

- Text: \$2 per line, \$10 minimum
- Ads: ¼-page - \$25, ½-page - \$50

Non-members:

- Text: \$3 per line, \$15 minimum
- Ads: ¼-page - \$30, ½-page - \$60

WE WANT TO HEAR FROM YOU!

Have a fun story or trip you want to share? Please submit your articles, along with pictures, to be considered for publication in the next *Pikes Pique* newsletter.

Please send to:

David Anderson, editor
danderso@uccs.edu

The deadline for submissions is the 14th of each month.

Use the above contact information for corrections and comments as well.